

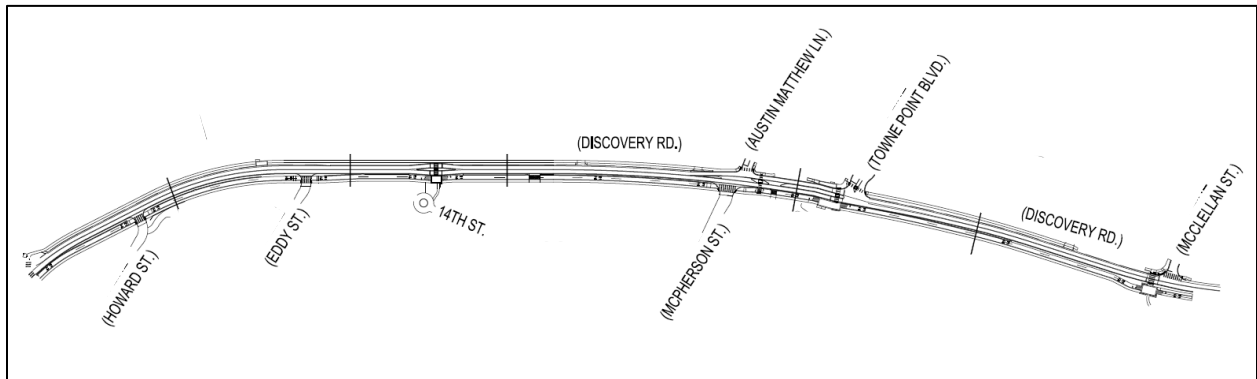
## Learn about the Discovery Road Project (coming soon to your neighborhood)

This newsletter is from the City of Port Townsend and provides information about the Discovery Road Project. You are receiving this newsletter because you own property that is within 300 feet of the project or have asked to be added to the mailing list. The City will issue a project newsletter every other month as the project progresses through design and construction. It is anticipated newsletters will be published regularly until the end of 2022. If you missed the last newsletter or are looking for additional background information about the Discovery Road Project, please visit the City's website at:

<https://cityofpt.us/publicworks/project/discovery-road-bikeway-and-sidewalk-project>

### Project Area:

The project area extends from the Rainier Street Roundabout to Salish Coast Elementary School at McClellan Street:



### Project Schedule:

The project schedule (subject to change) has been updated:

Task	Duration
Design	June 2021 - March 2022
Bidding Process	April 2022 – May 2022
Construction	June 2022 - January 2023

### Franchise Utilities:

The Jefferson County Public Utility District (PUD), Lumen (formerly Century Link), and Astound (formerly Wave) will be working in the project area starting in April 2022. They will underground overhead wires and install upgrades to their infrastructure. They intend to complete their work prior to start of construction for the Discovery Road Project.

**Project Elements:**

Each newsletter highlights infrastructure elements that will be constructed as part of the Discovery Road Project. This newsletter focuses on raised pedestrian crossings and streetlights.

**Streetlights:**

Streetlight poles and light fixtures will look similar to those on Rainier Street. Streetlights will be installed in alignment with the City's current Street Light Policy, adopted by City Council in August 2021. This policy reflects the value of maintaining dark night skies balanced with energy conservation and safety. Significant pedestrian crossings on Discovery Road will be illuminated, and otherwise, the target spacing of the streetlights will be 400 feet or more.

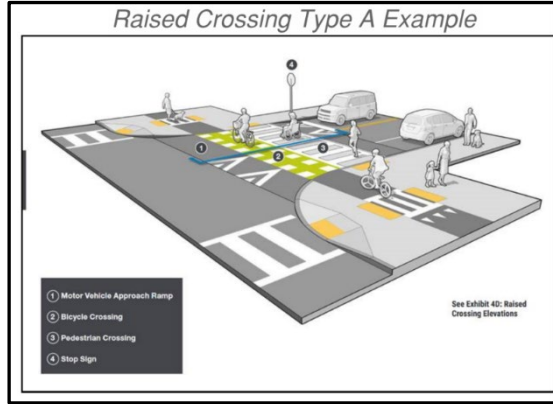


Discovery Road streetlights will look similar to those on Rainier Street (shown in the above photo).

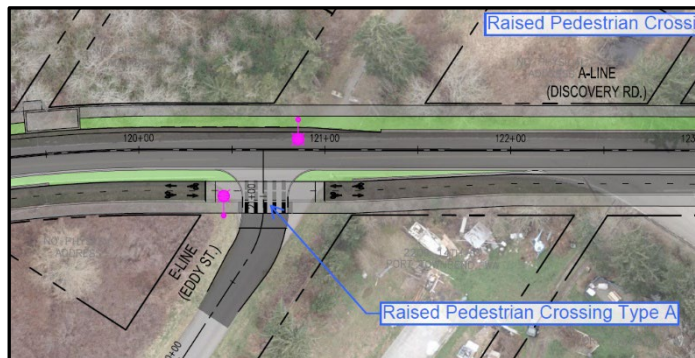
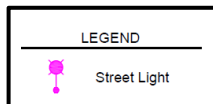
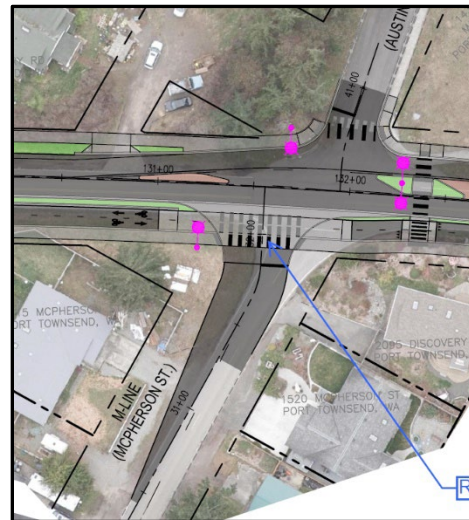
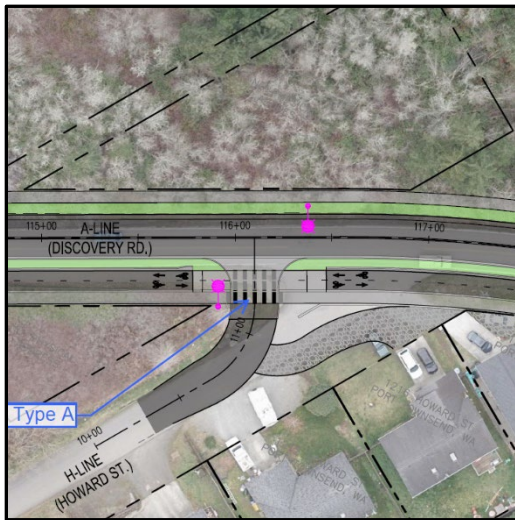
**Raised Pedestrian Crossings:**

There will be two types of raised pedestrian crossing – Type A and Type B. These types of pedestrian crossings slow down traffic and to make pedestrians/bikes more visible when crossing the street. Each crossing will also be illuminated by streetlights.

Type A raised crossings look like this:



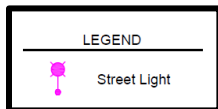
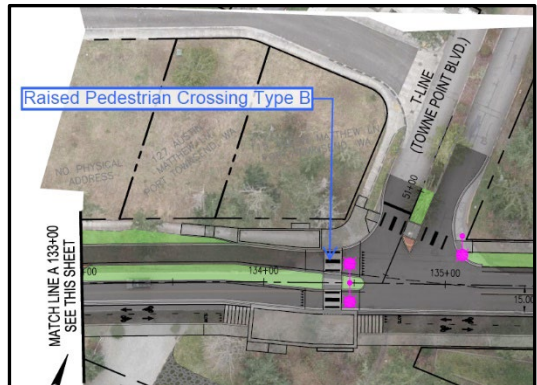
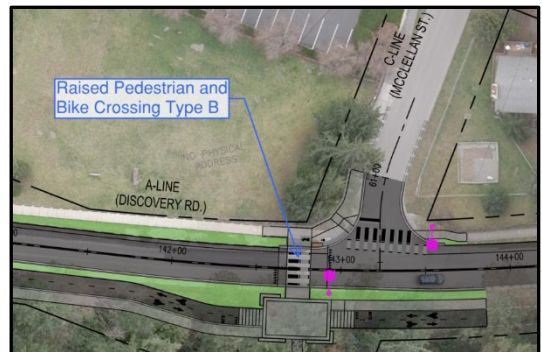
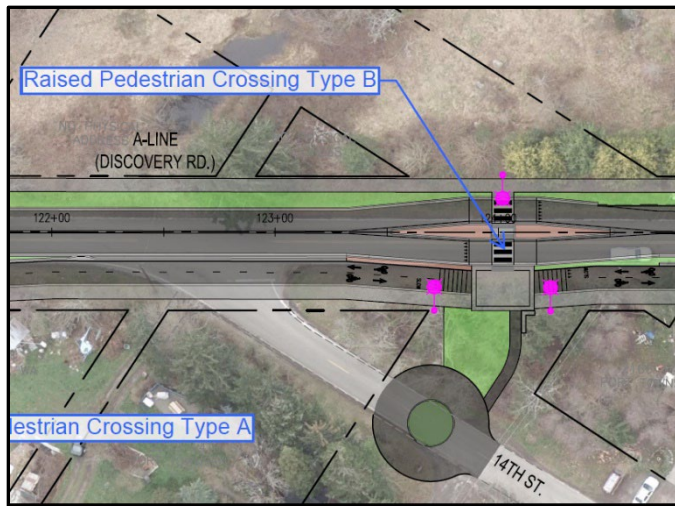
They will be installed at Howard Street, Eddy Street, and McPherson Street.



**Type B** raised crossings:  
They look similar to the crossing at F Street.



They will be installed at 14<sup>th</sup> Street, Towne Point Boulevard, and McClellan Street.



**Project Contact:**

If you have questions about the project, please contact the City's Discovery Road Project Manager, Laura Parsons, P.E. at [lparsons@cityofpt.us](mailto:lparsons@cityofpt.us) or 360-379-4432.