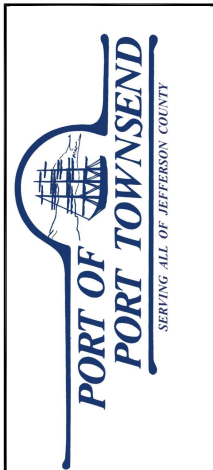
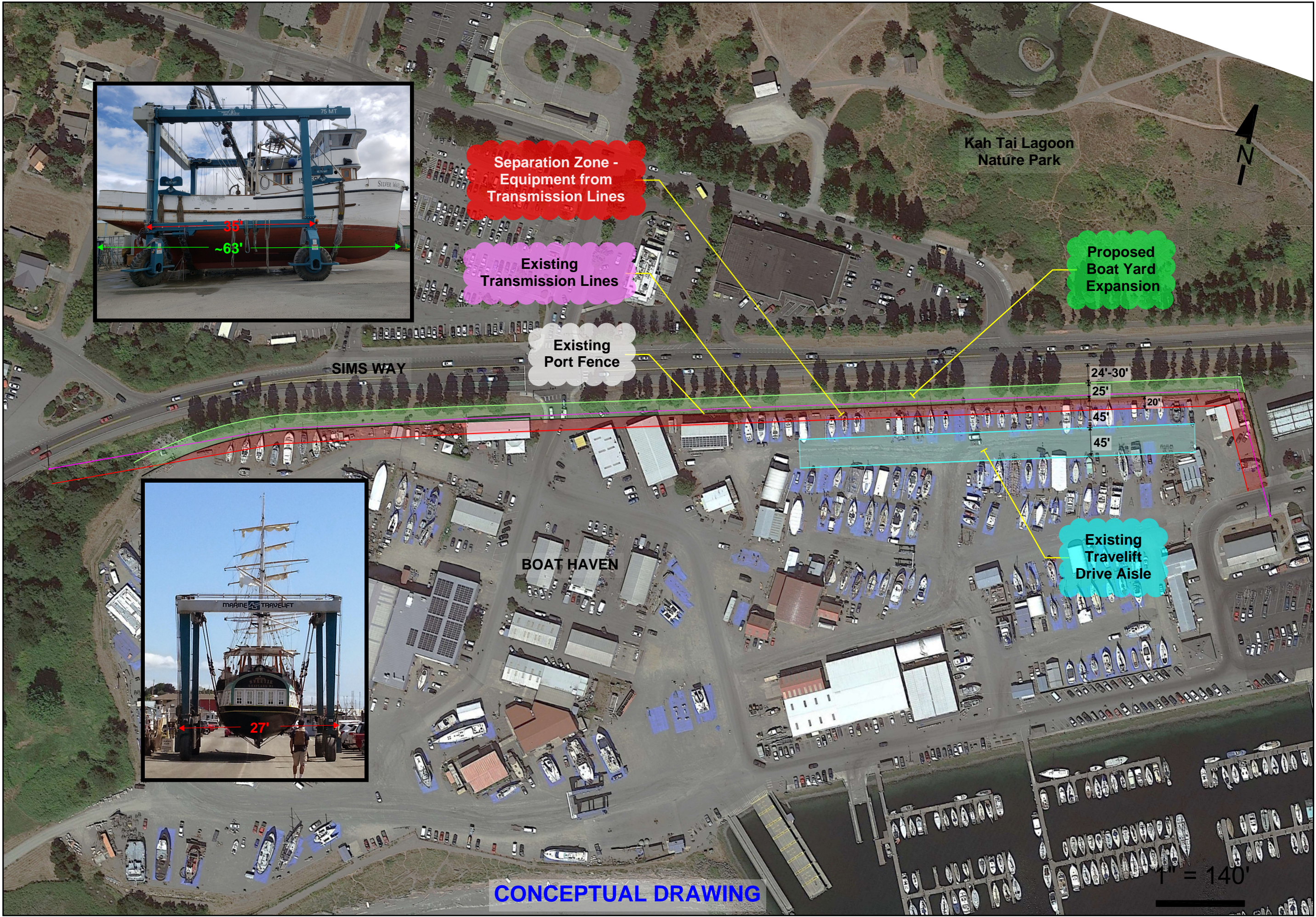


G:\Capital Projects\Boat Haven - boat_yard_expansion\05_Design\AutoCadd\Exhibit.dwg, 12/15/2021 10:29 AM, MATTHEW KLONTZ



DATE: 12/06/2022	NOTED: -	APPROVED: -
SCALE: -	DRAWN: -	CHECKED: -

No.	REVISION	DATE	APPD
0	EXHIBIT ONLY	-	-



PORT OF TOWNSEND
JEFFERSON COUNTY WASHINGTON

BOAT HAVEN YARD EXPANSION

SHEET: -
OF: -
JOB NO.: -
DWG: EXHIBIT