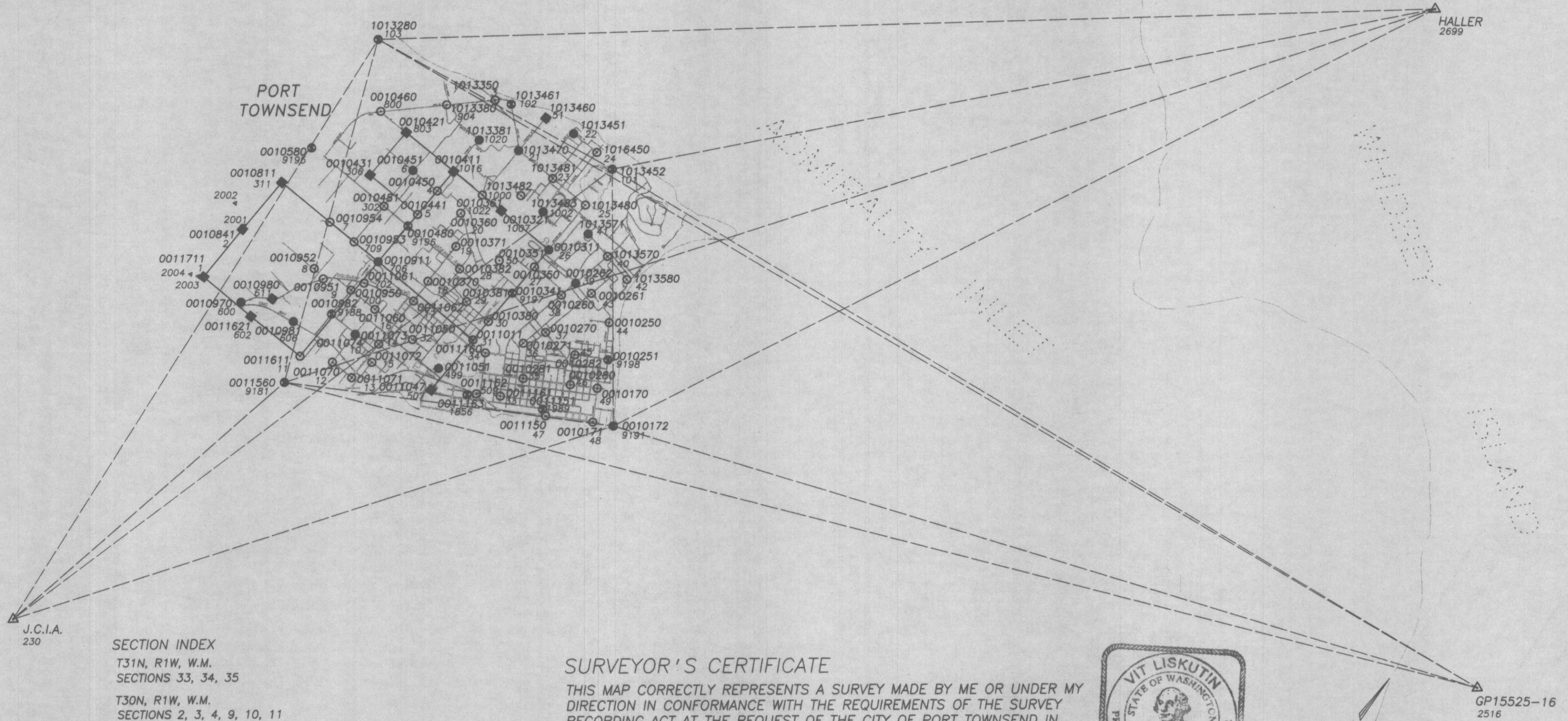


RECORD OF SURVEY GEODETIC CONTROL NETWORK AND MONUMENTATION PLAN FOR CITY OF PORT TOWNSEND, JEFFERSON COUNTY, WASHINGTON

NOTE:
THE PLANIMETRIC FEATURES SHOWN HEREON ARE
INTENDED FOR GENERAL INFORMATION ONLY.



SECTION INDEX
T31N, R1W, W.M.
SECTIONS 33, 34, 35

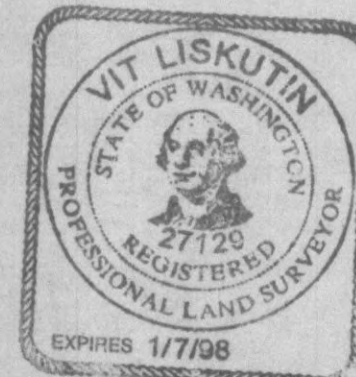
T30N, R1W, W.M.
SECTIONS 2, 3, 4, 9, 10, 11

- LEGEND:
(UNLESS OTHERWISE NOTED)
- SET STANDARD MONUMENT TIED BY DIRECT GPS MEASUREMENT (EXCEPT # 706 - TERRESTRIAL TRAVERSE MEASUREMENT)
 - EXISTING SURVEY MONUMENT TIED BY DIRECT GPS MEASUREMENT
 - EXISTING SURVEY MONUMENT TIED BY TERRESTRIAL MEASUREMENT FROM MONUMENT TIED BY DIRECT GPS MEASUREMENT
 - EXISTING SURVEY MONUMENT PER JEFFERSON COUNTY SURVEY CONTROL PROJECT 1991 WITH CORRESPONDING NUMBER, TIED BY DIRECT GPS MEASUREMENT
 - ▲ TEMPORARY SISTER POINT TIED BY DIRECT GPS MEASUREMENT TO TIE CONTROL MONUMENT BY TERRESTRIAL MEASUREMENT
 - 509 POINT "REFERENCE NUMBER" FOR CALCULATION AND INDEX
 - 0011047 POINT "ID NUMBER" BASED ON LOCATION OF THE POINT WITHIN THE PUBLIC LAND SURVEY SYSTEM (SEE EXPLANATION NOTES)
 - NON-TRIVIAL GPS VECTOR
 - - - TERRESTRIAL TRAVERSE MEASUREMENT
 - SECTION, 1/4 SECTION LINE

SURVEYOR'S CERTIFICATE

THIS MAP CORRECTLY REPRESENTS A SURVEY MADE BY ME OR UNDER MY DIRECTION IN CONFORMANCE WITH THE REQUIREMENTS OF THE SURVEY RECORDING ACT AT THE REQUEST OF THE CITY OF PORT TOWNSEND IN JANUARY 1997.

Vit Liskutin 10/17/97
VIT LISKUTIN L.S. 27129 DATE

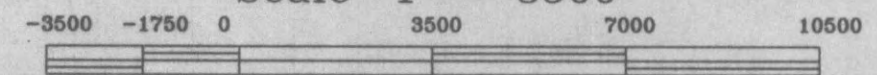


AUDITOR'S CERTIFICATE

FILED FOR RECORD THIS 20 DAY OF October 1997
AT 4:55 P.M. IN VOLUME 17 OF SURVEYS, AT PAGE 61-70
AT THE REQUEST OF POLARIS ENGINEERING AND SURVEYING, INC.

L. Auer
COUNTY AUDITOR

Scale 1" = 3500'



NAD 83(91)



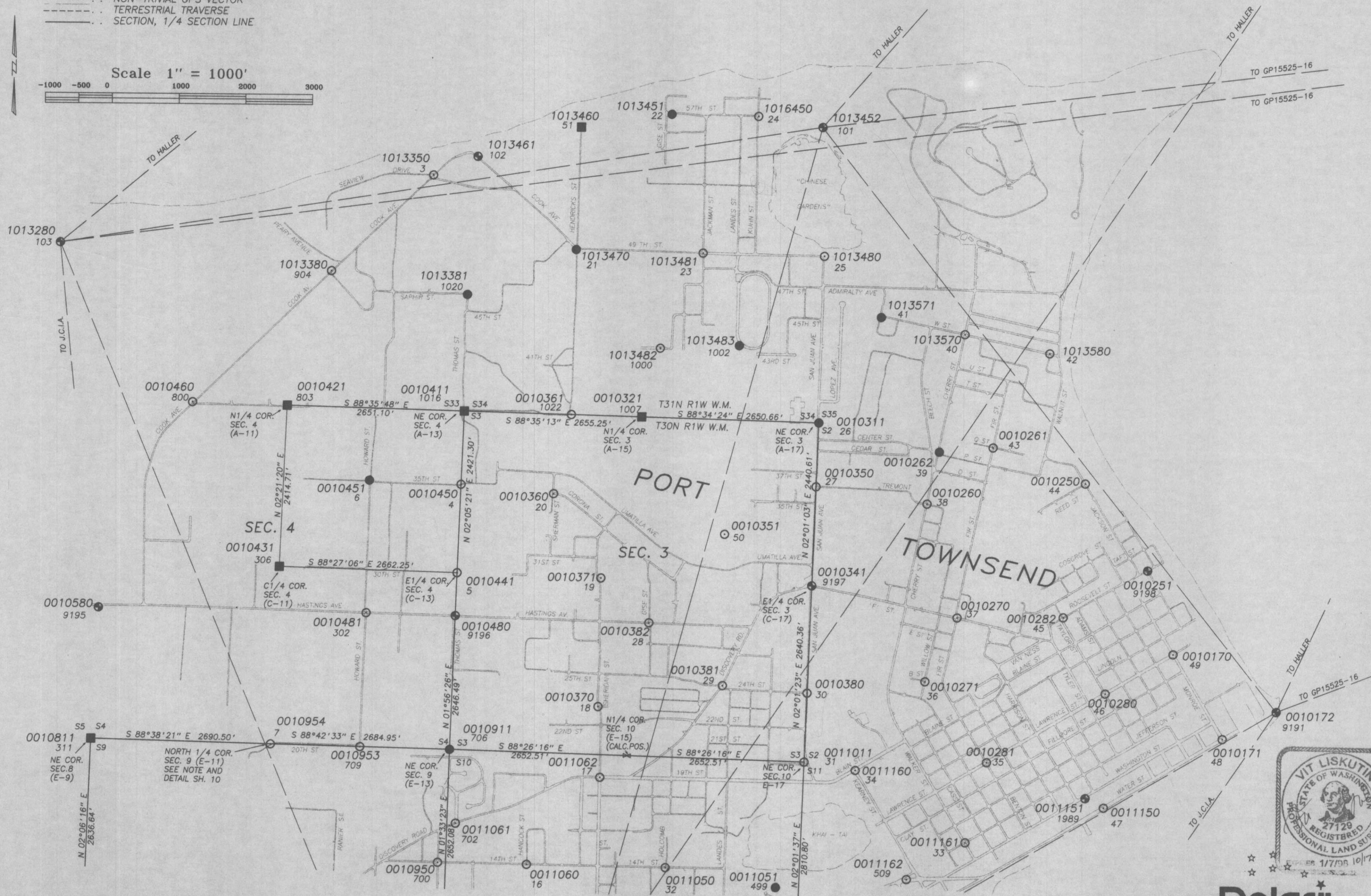
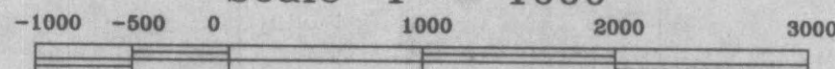
X:\disc\data\923257\PROJSM\G.S.

RECORD OF SURVEY GEODETIC CONTROL NETWORK AND MONUMENTATION PLAN

FOR
CITY OF PORT TOWNSEND, JEFFERSON COUNTY, WASHINGTON

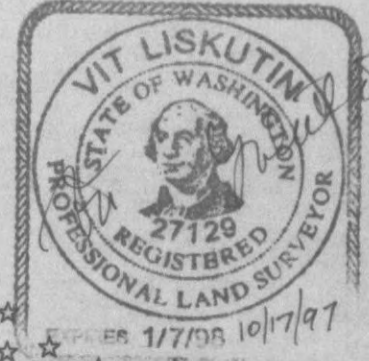
- LEGEND:
(UNLESS OTHERWISE-NOTED)
- SET STANDARD MONUMENT TIED BY DIRECT GPS MEASUREMENT (EXCEPT # 706 - TERRESTRIAL TRAVERSE TIE)
 - EXISTING SURVEY MONUMENT TIED BY DIRECT GPS MEASUREMENT
 - EXISTING SURVEY MONUMENT TIED BY TERRESTRIAL MEASUREMENT FROM MONUMENT TIED BY DIRECT GPS MEASUREMENT
 - ⊙ EXISTING SURVEY MONUMENT PER JEFFERSON COUNTY SURVEY CONTROL PROJECT 1991 WITH CORRESPONDING NUMBER, TIED BY DIRECT GPS MEASUREMENT
 - △ TEMPORARY SISTER POINT TIED BY DIRECT GPS MEASUREMENT TO TIE CONTROL MONUMENT BY TERRESTRIAL MEASUREMENT
 - 509 POINT "REFERENCE NUMBER" FOR CALCULATION AND INDEX
 - 0011047 POINT "ID NUMBER" BASED ON LOCATION OF THE POINT WITHIN THE PUBLIC LAND SURVEY SYSTEM (SEE EXPLANATION NOTES)
 - NON-TRIVIAL GPS VECTOR
 - - - TERRESTRIAL TRAVERSE
 - SECTION, 1/4 SECTION LINE

Scale 1" = 1000'



SEE SH. 3

SEE SH. 3



Polaris

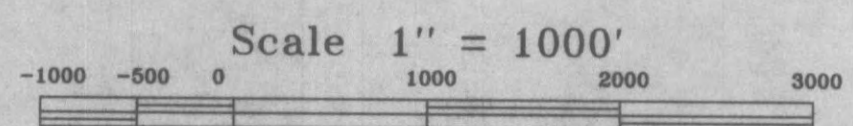
SHEET 2 OF 10
JOB NO. 96087

Polaris Engineering & Surveying
206S. Lincoln St. Ste. 201 Port Angeles Washington, 98362 (206) 452-5393

RECORD OF SURVEY GEODETIC CONTROL NETWORK AND MONUMENTATION PLAN FOR CITY OF PORT TOWNSEND, JEFFERSON COUNTY, WASHINGTON



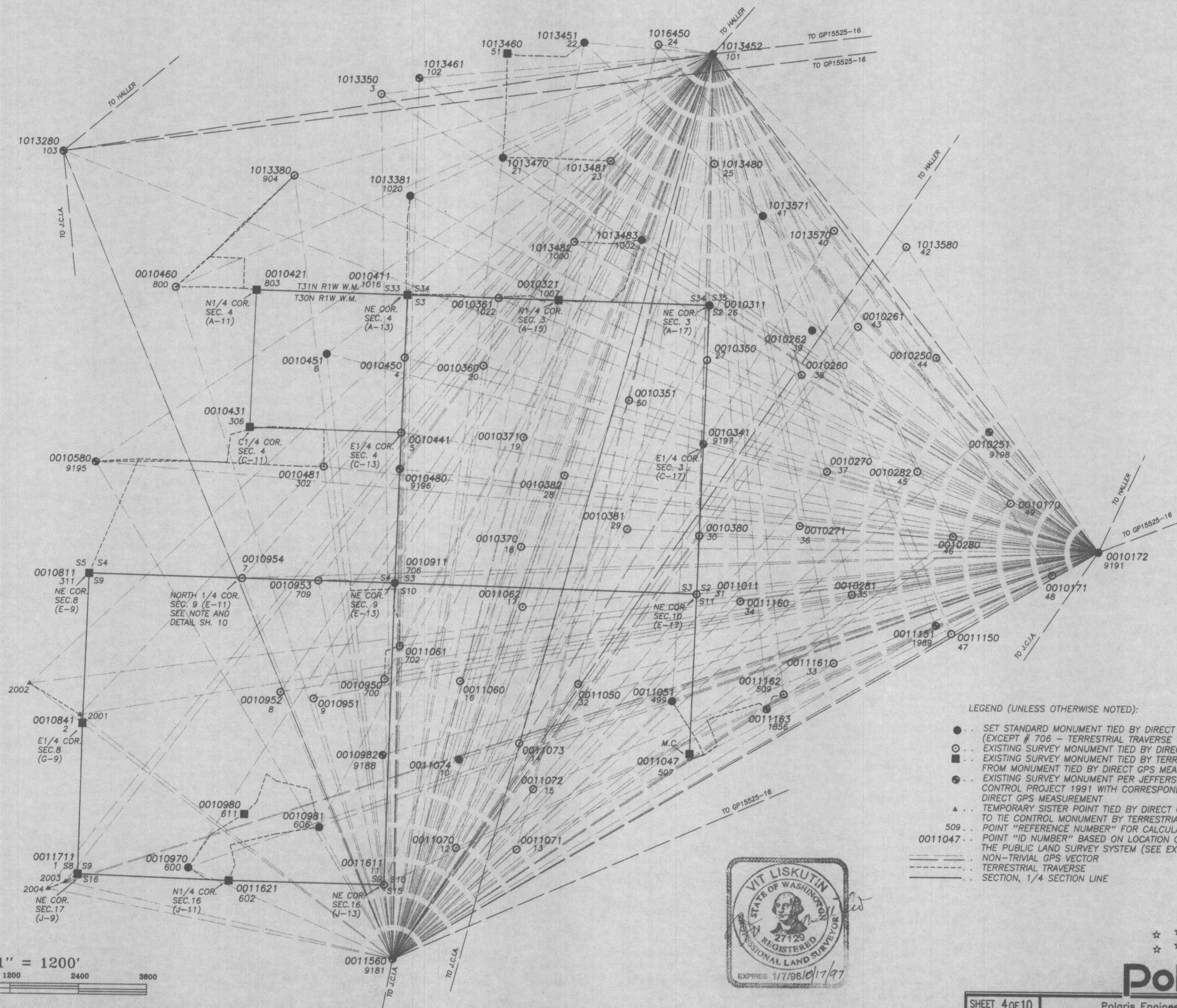
- LEGEND:**
(UNLESS OTHERWISE NOTED)
- SET STANDARD MONUMENT TIED BY DIRECT GPS MEASUREMENT (EXCEPT # 706 - TERRESTRIAL TRAVERSE TIE)
 - EXISTING SURVEY MONUMENT TIED BY DIRECT GPS MEASUREMENT
 - EXISTING SURVEY MONUMENT TIED BY TERRESTRIAL MEASUREMENT FROM MONUMENT TIED BY DIRECT GPS MEASUREMENT
 - ⊕ EXISTING SURVEY MONUMENT PER JEFFERSON COUNTY SURVEY CONTROL PROJECT 1991 WITH CORRESPONDING NUMBER, TIED BY DIRECT GPS MEASUREMENT
 - ▲ TEMPORARY SISTER POINT TIED BY DIRECT GPS MEASUREMENT TO TIE CONTROL MONUMENT BY TERRESTRIAL MEASUREMENT POINT "REFERENCE NUMBER" FOR CALCULATION AND INDEX
 - 509... POINT "ID NUMBER" BASED ON LOCATION OF THE POINT WITHIN THE PUBLIC LAND SURVEY SYSTEM (SEE EXPLANATION NOTES)
 - 0011047... POINT "ID NUMBER" BASED ON LOCATION OF THE POINT WITHIN THE PUBLIC LAND SURVEY SYSTEM (SEE EXPLANATION NOTES)
 - — — — — NON-TRIVIAL GPS VECTOR
 - — — — — TERRESTRIAL TRAVERSE
 - — — — — SECTION, 1/4 SECTION LINE



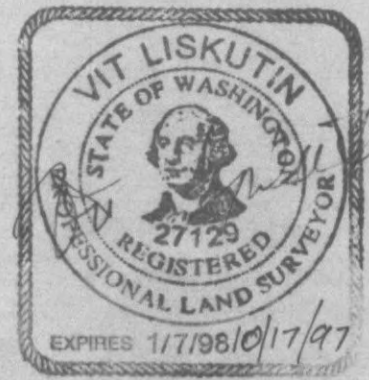
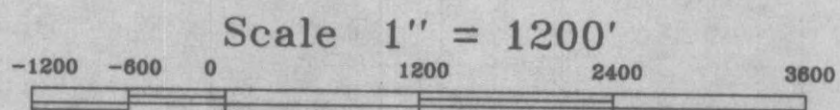
X:\disc\data\92325\ROCsm\p42

RECORD OF SURVEY GEODETIC CONTROL NETWORK AND MONUMENTATION PLAN

FOR
CITY OF PORT TOWNSEND, JEFFERSON COUNTY, WASHINGTON



- LEGEND (UNLESS OTHERWISE NOTED):**
- SET STANDARD MONUMENT TIED BY DIRECT GPS MEASUREMENT (EXCEPT # 706 - TERRESTRIAL TRAVERSE TIE)
 - EXISTING SURVEY MONUMENT TIED BY DIRECT GPS MEASUREMENT
 - EXISTING SURVEY MONUMENT TIED BY TERRESTRIAL MEASUREMENT FROM MONUMENT TIED BY DIRECT GPS MEASUREMENT
 - ⊙ EXISTING SURVEY MONUMENT PER JEFFERSON COUNTY SURVEY CONTROL PROJECT 1991 WITH CORRESPONDING NUMBER, TIED BY DIRECT GPS MEASUREMENT
 - ▲ TEMPORARY SISTER POINT TIED BY DIRECT GPS MEASUREMENT TO TIE CONTROL MONUMENT BY TERRESTRIAL MEASUREMENT
 - 509... POINT "REFERENCE NUMBER" FOR CALCULATION AND INDEX
 - 0011047... POINT "ID NUMBER" BASED ON LOCATION OF THE POINT WITHIN THE PUBLIC LAND SURVEY SYSTEM (SEE EXPLANATION NOTES)
 - NON-TRIVIAL GPS VECTOR
 - TERRESTRIAL TRAVERSE
 - SECTION, 1/4 SECTION LINE



X:\disc\data\92325\PRODM\DES.

RECORD OF SURVEY GEODETIC CONTROL NETWORK AND MONUMENTATION PLAN FOR CITY OF PORT TOWNSEND, JEFFERSON COUNTY, WASHINGTON

NOTES:

HORIZONTAL POSITIONS:

DATUM:
COORDINATE VALUES SHOWN HEREON ARE BASED ON THE WASHINGTON COORDINATE SYSTEM OF 1983, ADJUSTMENT 1991, NORTH ZONE, NORTH AMERICAN DATUM (NAD) 1983(91).

METHOD:
GLOBAL POSITIONING SYSTEM (GPS) FAST STATIC METHOD, COMBINED WITH TERRESTRIAL TRAVERSE.

EXISTING CONTROL STATIONS USED:
WASHINGTON HIGH ACCURACY REFERENCE NETWORK (HARN) STATIONS "J.C.I.A." AND "HALLER" AS PUBLISHED BY NATIONAL GEODETIC SURVEY (N.G.S.) AND CLASSIFIED AS ORDER B ACCURACY, TOGETHER WITH THE STATION "GP15525-16" ESTABLISHED AND PUBLISHED BY THE WASHINGTON STATE DEPARTMENT OF TRANSPORTATION, GEOGRAPHIC SERVICES, CLASSIFIED AS GPS CLASS C ACCURACY.

ACCURACY OF COORDINATES PUBLISHED HEREON:
THE GPS CONTROL PORTION OF THIS SURVEY MEETS REQUIREMENTS FOR SECOND ORDER ACCURACY BASED ON THE STANDARDS AND SPECIFICATIONS FOR GEODETIC CONTROL NETWORKS PUBLISHED BY FEDERAL GEODETIC CONTROL COMMITTEE (F.G.C.C.). POSITIONS ESTABLISHED BY TERRESTRIAL TRAVERSES ARE IN COMPLIANCE WITH WAC 332-130-090(1)(f).

VERTICAL POSITIONS:

DATUM:
ORTHOMETRIC ELEVATIONS SHOWN HEREON ARE BASED ON THE NORTH AMERICAN VERTICAL DATUM (NAVD) OF 1988.

METHOD:
GLOBAL POSITIONING SYSTEM (GPS), FAST STATIC METHOD COMBINED WITH DIFFERENTIAL AND TRIGONOMETRIC LEVELING.

EXISTING CONTROL STATIONS USED:
WASHINGTON HIGH ACCURACY REFERENCE NETWORK (HARN) STATIONS "J.C.I.A." AND "HALLER" AS PUBLISHED BY NATIONAL GEODETIC SURVEY (N.G.S.) AND CLASSIFIED AS THIRD ORDER ACCURACY. STATION "GP15525-16" ESTABLISHED AND PUBLISHED BY THE WASHINGTON STATE DEPARTMENT OF TRANSPORTATION, GEOGRAPHIC SERVICES, AND CLASSIFIED AS THIRD ORDER ACCURACY. THE BENCH MARK Q - 257 AS PUBLISHED BY N.G.S. AND CLASSIFIED AS 1ST ORDER, CLASS II ACCURACY WAS USED TO ESTABLISH ELEVATIONS OF STATIONS 36 AND 37 BY DIFFERENTIAL LEVELING. THESE ELEVATIONS OF THE STATIONS 36 AND 37 WERE USED IN THE NETWORK ADJUSTMENT.

ACCURACY OF ELEVATIONS PUBLISHED HEREON:
THE ORTHOMETRIC ELEVATIONS DERIVED BY DIFFERENTIAL LEVELING ARE CLASSIFIED AS THIRD ORDER ACCURACY (STATIONS 36, 37), BASED ON THE STANDARDS AND SPECIFICATIONS FOR GEODETIC CONTROL NETWORKS PUBLISHED BY FEDERAL GEODETIC CONTROL COMMITTEE (F.G.C.C.). ORTHOMETRIC ELEVATIONS DERIVED BY GPS ARE ASSUMED TO BE OF THIRD ORDER ACCURACY. ORTHOMETRIC ELEVATIONS DERIVED BY TRIGONOMETRIC LEVELING MAY NOT MEET CLASSIFICATION OF THIRD ORDER ACCURACY, AND ARE PUBLISHED TO THE NEAREST 0.1'. ELEVATIONS OF STATIONS 306 AND 311 WERE NOT SUITABLE FOR PUBLISHING.

UNLESS OTHERWISE NOTED IN THE "MONUMENT RECOVERY REPORTS", THE ELEVATIONS PUBLISHED HEREON ARE RELATED TO THE "PUNCH" OR "X" MARK ON THE MONUMENT CAP.

EQUIPMENT USED:
FIVE GPS RECEIVERS TRIMBLE NAVIGATION, MODEL "4600LS SURVEYOR", SINGLE FREQUENCY.
ELECTRONIC TOTAL STATIONS SOKKIA SET 3B (5 SECOND), SET 4B (10 SECOND)
AUTOMATIC LEVEL SOKKISHA B2C.

DATE OF FIELD SURVEY: JANUARY - JUNE, 1997.
(UNLESS OTHERWISE STATED, ALL MONUMENTS INCLUDED IN THIS SURVEY WERE RECOVERED DURING THIS TIME)

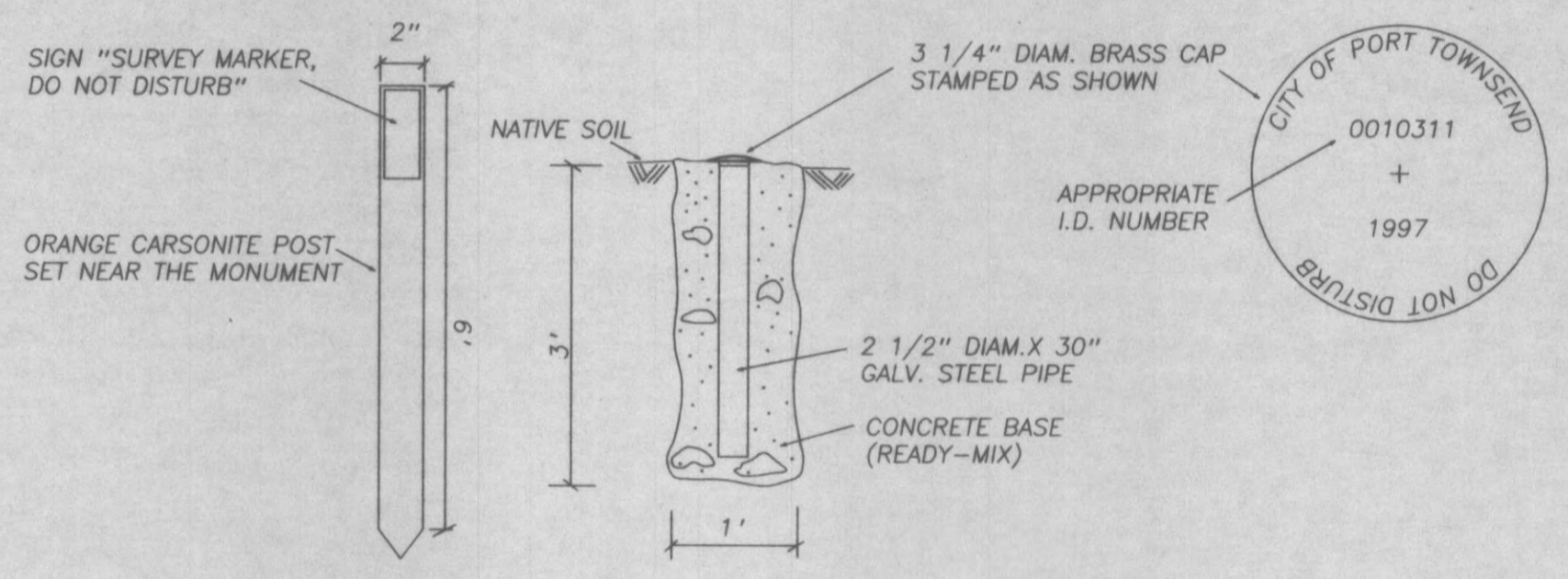
LEGEND (UNLESS OTHERWISE NOTED):

- SET STANDARD MONUMENT TIED BY DIRECT GPS MEASUREMENT (EXCEPT # 706 - TERRESTRIAL TRAVERSE TIE)
- EXISTING SURVEY MONUMENT TIED BY DIRECT GPS MEASUREMENT
- EXISTING SURVEY MONUMENT TIED BY TERRESTRIAL MEASUREMENT FROM MONUMENT TIED BY DIRECT GPS MEASUREMENT
- ◐ EXISTING SURVEY MONUMENT PER JEFFERSON COUNTY SURVEY CONTROL PROJECT 1991 WITH CORRESPONDING NUMBER, TIED BY DIRECT GPS MEASUREMENT
- ▲ TEMPORARY SISTER POINT TIED BY DIRECT GPS MEASUREMENT TO TIE CONTROL MONUMENT BY TERRESTRIAL MEASUREMENT
- 509 POINT "REFERENCE NUMBER" FOR CALCULATION AND INDEX
- 0011047 POINT "ID NUMBER" BASED ON LOCATION OF THE POINT WITHIN THE PUBLIC LAND SURVEY SYSTEM (SEE EXPLANATION NOTES)
- NON-TRIVIAL GPS VECTOR
- TERRESTRIAL TRAVERSE
- SECTION, 1/4 SECTION LINE

SURVEY MONUMENT NOTES:

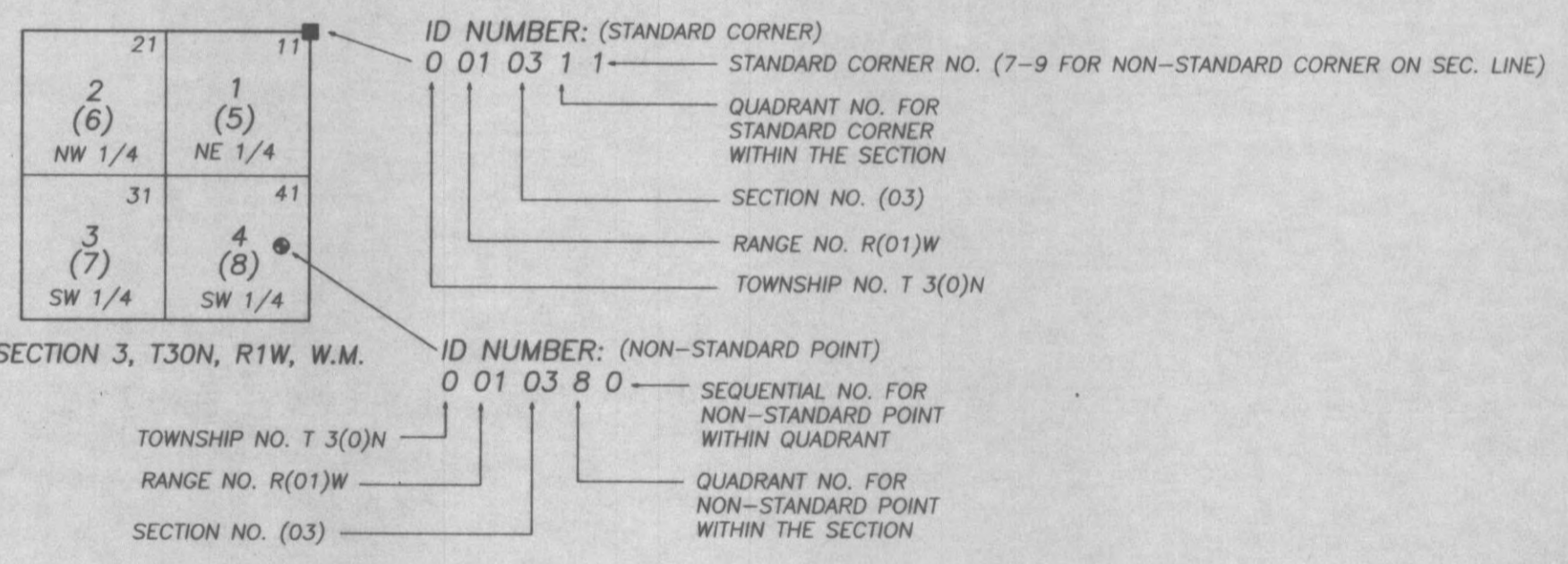
REFER TO THE "SURVEY MONUMENT RECOVERY REPORTS" ON FILE WITH THE CITY OF PORT TOWNSEND, DEPARTMENT OF PUBLIC WORKS, FOR INFORMATION REGARDING THE DESCRIPTION AND LOCATION OF THE SURVEY MONUMENTS INCLUDED IN THIS PROJECT.

"STANDARD SURVEY MONUMENT" SET PER THIS PROJECT:



MONUMENT IDENTIFICATION NUMBER (I.D. NUMBER) SYSTEM:

THIS NUMBER REPRESENTS LOCATION OF THE POINT WITHIN THE PUBLIC LAND SURVEY SYSTEM (PLSS) AND IS BASED ON THE JEFFERSON COUNTY ASSESSOR NUMBERING SYSTEM FOR PARCEL MAPS. REFER TO JEFFERSON COUNTY ASSESSOR FOR MORE INFORMATION. THE NUMBERING SYSTEM FOR STANDARD CORNERS IS PROGRESSIVE FROM SOUTH AND WEST.



MONUMENT "REFERENCE NUMBER":
NUMBER ASSIGNED TO EACH POINT INCLUDED IN THIS PROJECT FOR CALCULATION, INDEX AND SIMILAR PURPOSES.

BOUNDARY NOTE:
EXCEPT FOR SPECIFICALLY IDENTIFIED SECTION AND QUARTER SECTION CORNERS, THIS SURVEY DOES NOT PURPORT TO VALIDATE THE POSITION OF ANY MONUMENT INCLUDED IN THIS PROJECT AS IT RELATES TO THE LOCATION OF BOUNDARY LINES.

CALCULATION NOTE:
REFER TO THE "CALCULATION AND ADJUSTMENT REPORT" PREPARED FOR THIS PROJECT ON FILE WITH THE CITY OF PORT TOWNSEND, DEPARTMENT OF PUBLIC WORKS, FOR INFORMATION REGARDING THE CALCULATION, ADJUSTMENT, ERROR ANALYSIS, COORDINATE STANDARD DEVIATIONS AND OTHER PARTICULARS.

GEOID MODEL: GEOID 96



X/disc/data/92325/ROSM/DES.2

RECORD OF SURVEY GEODETIC CONTROL NETWORK AND MONUMENTATION PLAN

FOR
CITY OF PORT TOWNSEND, JEFFERSON COUNTY, WASHINGTON

COORDINATE LIST

REF.NO.	I.D.NO.	NORTHING (US FEET)	EASTING (US FEET)	ORTHOMETRIC ELEVATION (US FEET)	REF.NO.	I.D.NO.	NORTHING (US FEET)	EASTING (US FEET)	ORTHOMETRIC ELEVATION (US FEET)
1	0011711	407 561.16	1 154 604.36	223.8	46	0010280	413 634.09	1 169 933.09	117.48
2	0010841	410 207.48	1 154 665.04	190.7	47	0011150	411 925.92	1 169 919.84	13.96
3	1013350	421 312.60	1 159 824.41	97.64	48	0010171	412 967.84	1 171 686.73	13.69
4	0010450	416 685.49	1 160 273.84	245.17	49	0010170	414 229.54	1 170 942.58	82.13
5	0010441	415 362.94	1 160 225.49	239.82	50	0010351	415 969.52	1 164 221.48	35.02
6	0010451	416 736.95	1 158 903.82	207.82	51	1013460	422 044.52	1 162 028.08	83.7
7	0010954	412 778.28	1 157 452.28	280.61	101	1013452	422 072.42	1 165 641.40	14.36
8	0010952	410 787.05	1 158 145.80	270.59	102	1013461	421 596.88	1 160 485.47	101.26
9	0010951	410 676.46	1 158 726.40	256.47	103	1013280	420 263.06	1 154 246.75	293.14
10	0011074	409 629.92	1 161 291.80	226.91	230	JCIA	390 874.418	1 157 212.279	106.3
11	0011611	407 415.77	1 159 991.80	174.37	302	0010481	414 754.28	1 158 870.30	229.10
12	0011070	408 077.95	1 161 254.83	196.15	306	0010431	415 434.88	1 157 564.21	
13	0011071	408 061.41	1 162 319.69	173.48	311	0010811	412 842.34	1 154 761.86	
14	0011073	409 924.27	1 162 348.52	193.09	499	0011051	410 691.09	1 165 026.18	13.17
15	0011072	409 121.28	1 162 602.12	172.89	507	0011047	409 764.30	1 165 339.49	10.8
16	0011060	411 007.79	1 161 300.08	238.92	509	0011162	410 830.23	1 166 983.55	11.02
17	0011062	412 318.69	1 162 385.52	168.46	600	0010970	407 691.26	1 156 549.86	151.09
18	0010370	413 375.12	1 162 349.18	188.62	602	0011621	407 469.02	1 157 263.67	144.4
19	0010371	415 302.50	1 162 376.16	211.76	606	0010981	408 420.73	1 158 847.58	228.86
20	0010360	416 556.28	1 161 658.53	232.26	611	0010980	408 638.92	1 157 525.71	212.0
21	1013470	420 212.58	1 161 966.76	37.42	700	0010950	411 028.40	1 159 969.77	250.55
22	1013451	422 250.07	1 163 381.02	29.28	702	0011061	411 613.33	1 160 231.71	253.78
23	1013481	420 173.59	1 163 864.68	18.74	706	0010911	412 717.97	1 160 135.87	253.4
24	1016450	422 229.28	1 164 679.20	32.48	709	0010953	412 748.34	1 158 793.66	257.45
25	1013480	420 142.50	1 165 680.81	7.78	800	0010460	417 886.82	1 156 241.81	211.42
26	0010311	417 651.15	1 165 618.04	29.24	803	0010421	417 847.55	1 157 663.46	209.1
27	0010350	416 693.50	1 165 584.37	34.14	904	1013380	419 864.39	1 158 310.03	71.62
28	0010382	414 638.62	1 163 099.42	183.94	1000	1013482	418 748.07	1 163 236.65	114.75
29	0010381	413 705.52	1 164 207.54	100.11	1002	1013483	418 795.72	1 164 418.64	23.95
30	0010380	413 603.57	1 165 475.31	35.62	1007	0010321	417 717.15	1 162 968.20	71.5
31	0011011	412 573.34	1 165 438.91	18.08	1016	0010411	417 782.63	1 160 313.76	142.6
32	0011050	410 975.60	1 163 374.75	107.50	1020	1013381	419 525.93	1 160 346.44	51.67
33	0011161	411 388.24	1 167 856.24	75.16	1022	0010361	417 743.33	1 161 914.98	80.50
34	0011160	412 456.24	1 166 205.62	45.51	1856	0011163	410 562.90	1 166 690.00	10.86
35	0010281	412 592.06	1 168 166.56	145.15	1989	0011151	412 066.42	1 169 644.18	97.64
36	0010271	413 792.34	1 167 236.92	125.78	2516	GP15525-16	427 440.690	1 208 762.281	224.28
37	0010270	414 754.45	1 167 709.84	128.46	2699	HALLER	449 395.089	1 189 298.550	103.8
38	0010260	416 449.89	1 167 246.13	83.82	9181	0011560	406 115.92	1 160 154.64	63.75
39	0010262	417 232.10	1 167 423.90	121.64	9188	0010982	409 694.57	1 159 949.14	243.80
40	1013570	418 993.22	1 167 793.14	69.55	9191	0010172	413 378.61	1 172 490.22	11.90
41	1013571	419 237.89	1 166 539.24	32.41	9195	0010580	414 807.32	1 154 859.76	184.73
42	1013580	418 719.87	1 169 064.00	80.78	9196	0010480	414 723.32	1 160 203.91	227.96
43	0010261	417 303.25	1 168 227.44	175.72	9197	0010341	415 212.05	1 165 532.12	22.90
44	0010250	416 777.08	1 169 610.40	234.29	9198	0010251	415 482.13	1 170 553.97	79.62
45	0010282	414 771.84	1 169 295.96	156.68		B.M. Q-257			178.0

CONVERGENCE ANGLE: - 1°27'29.2" (PROJECT AVERAGE)
 SCALE FACTOR: 0.99994229 (PROJECT AVERAGE)
 ELEVATION FACTOR: 0.99999685 (PROJECT AVERAGE)
 COMBINED FACTOR: 0.99993914 (PROJECT AVERAGE)



X/disc/data/92325/PROSM/DES.3

GENERAL LAND OFFICE SURVEY HISTORY:
THE ORIGINAL G.L.O. SURVEY AND SUBDIVISION OF TOWNSHIP 30 NORTH,
RANGE 1 WEST, W.M., WAS PERFORMED BY JOHN TRUTCH, DEPUTY SURVEYOR,
UNDER CONTRACT NO. 33, DATED APRIL 1858. NO ORIGINAL EVIDENCE HAS
BEEN RECOVERED FOR CORNER POSITIONS DOCUMENTED BY THIS SURVEY,
UNLESS OTHERWISE NOTED UNDER "SECTION CORNER NOTES".

RECORD OF SURVEY GEODETIC CONTROL NETWORK AND MONUMENTATION PLAN

FOR
CITY OF PORT TOWNSEND, JEFFERSON COUNTY, WASHINGTON

SECTION CORNER NOTES

SECTION 3, T30N, R1W, W.M.

26, 0010311

NORTHEAST CORNER SECTION 3 (A-17)

ACCEPTED CORNER:

EVIDENCE FOUND: JANUARY 11, 1993
MONUMENT IS SANDSTONE POST WITH BRASS DISK AND PIN. THE MONUMENT TIED IN
A SURVEY CONTROL TRAVERSE.

CORNER RESTORATION:

FEBRUARY 1997 - THIS MONUMENT REPORTED DISTURBED AND DAMAGED BY CONSTRUCTION.
MARCH 5, 1997 - SET A NEW MONUMENT IN THE SAME POSITION BASED THE ON PREVIOUS
CONTROL TIES. NEW MONUMENT IS A STANDARD MONUMENT PER THE PROJECT
SPECIFICATIONS (SEE SH. 5 OF THIS SURVEY). BRASS CAP IS STAMPED AS SHOWN.
THIS POSITION ACCEPTED AS POINT OF LOCAL CONTROL PER SECTION 6-28 OF "MANUAL
OF INSTRUCTIONS FOR THE SURVEY OF THE PUBLIC LANDS OF THE UNITED STATES 1973"
BY BUREAU OF LAND MANAGEMENT.

RECOVERY HISTORY:

1940 - JEFFERSON COUNTY NOTES DESCRIBED THIS MONUMENT AS A "STONE MONUMENT WITH
COPPER PLUG AND 'X' AT CENTER".

THIS MONUMENT DESCRIBED AS "SANDSTONE MONUMENT" APPEARS ON THE FOLLOWING MAPS
OF RECORD:

RECORDS OF SURVEY - VOL. 2, PG. 52, FISHER L.S.;
VOL. 5, PG. 46, E.E.ANDERSON L.S., 1981; VOL. 9, PG. 29, CARMAN L.S., 1987;
VOL. 10, PG. 25, NESARY L.S., 1989.

SHORT PLATS - VOL. 2, PG. 27, E. E. ANDERSON L.S., 1983;

THIS MONUMENT IS ALSO SHOWN ON THE UNRECORDED SURVEY "PORT TOWNSEND STREET
MONUMENTATION" PREPARED BY E.E. ANDERSON, L.S., FOR THE CITY OF PORT
TOWNSEND IN 1970'S. THIS SURVEY IS ON FILE WITH THE CITY OF PORT TOWNSEND,
DEPT. OF PUBLIC WORKS, AND HAS BEEN ACCEPTED AND USED FOR BOUNDARY SURVEYS IN
PORT TOWNSEND.

9197, 0010341

EAST QUARTER CORNER SECTION 3 (C-17)

ACCEPTED CORNER:

EVIDENCE FOUND: DECEMBER 3, 1996
1" DIAM. BRASS CAP WITH PUNCH MARK IN CONCRETE IN MONUMENT CASE WITH CASE
COVER FLUSH WITH ROAD SURFACE. THE BRASS CAP IS 3" BELOW THE CASE COVER.

CORNER RESTORATION:

THIS POSITION ACCEPTED AS POINT OF LOCAL CONTROL PER SECTION 6-28 OF "MANUAL
OF INSTRUCTIONS FOR THE SURVEY OF THE PUBLIC LANDS OF THE UNITED STATES 1973"
BY BUREAU OF LAND MANAGEMENT.

RECOVERY HISTORY:

1957 - JEFFERSON COUNTY NOTES REPORT THIS MONUMENT "BURIED BENEATH ROAD
SURFACE AND RESET FROM REFERENCES".

COMMON DESCRIPTION AMONG THE SURVEYS FOR THIS MONUMENT IS "CONCRETE MONUMENT
IN CASE". THE MONUMENT APPEARS ON THE FOLLOWING MAPS OF RECORD:

RECORDS OF SURVEY - VOL. 7, PG. 93, FISHER L.S., 1985;

VOL. 8, PG. 75, FISHER L.S., 1986;

VOL. 9, PG. 29, CARMAN L.S., 1987;

SHORT PLATS - VOL. 1, PG.109 ; VOL. 2, PG. 37, E. E. ANDERSON L.S., 1983;

THIS MONUMENT IS ALSO SHOWN ON THE UNRECORDED SURVEY "PORT TOWNSEND STREET
MONUMENTATION" PREPARED BY E. E. ANDERSON, L.S., FOR THE CITY OF PORT
TOWNSEND IN 1970'S. THIS SURVEY IS ON FILE WITH THE CITY OF PORT TOWNSEND,
DEPT. OF PUBLIC WORKS AND HAS BEEN ACCEPTED AND USED FOR BOUNDARY SURVEYS
IN PORT TOWNSEND.

31, 0011011

SOUTHEAST CORNER SECTION 3 (E-17)

(NORTHEAST CORNER SECTION 10)

ACCEPTED CORNER:

EVIDENCE FOUND: FEBRUARY 27, 1997
MONUMENT IS 6"X 6" SANDSTONE POST WITH "X" CHISELED IN THE TOP. THE TOP OF
THE MONUMENT IS 15" BELOW SURROUNDING GRASSY SOIL. SET STEEL CASE IN CEMENT
OVER THE MONUMENT.

CORNER RESTORATION:

THIS POSITION ACCEPTED AS POINT OF LOCAL CONTROL PER SECTION 6-28 OF "MANUAL
OF INSTRUCTIONS FOR THE SURVEY OF THE PUBLIC LANDS OF THE UNITED STATES 1973"
BY BUREAU OF LAND MANAGEMENT.

RECOVERY HISTORY:

1940 - JEFFERSON COUNTY NOTES REPORT THIS MONUMENT AS "STONE MONUMENT".

COMMON DESCRIPTION AMONG THE SURVEYS FOR THIS MONUMENT IS "SANDSTONE MONUMENT".
THE MONUMENT APPEARS ON THE FOLLOWING MAPS OF RECORD:

RECORDS OF SURVEY - VOL. 2, PG. 52, FISHER L.S.;

VOL. 5, PG. 46, ANDERSON L.S., 1981; VOL. 9, PG. 29, CARMAN L.S., 1987;

VOL. 10, PG. 25, NESARY L.S., 1989;

SHORT PLATS - VOL. 2, PG. 37, E. E. ANDERSON L.S., 1983;

THIS MONUMENT IS ALSO SHOWN ON THE UNRECORDED SURVEY "PORT TOWNSEND STREET
MONUMENTATION" PREPARED BY E.E. ANDERSON, L.S., FOR THE CITY OF PORT TOWNSEND
IN 1970'S. THIS SURVEY IS ON FILE WITH THE CITY OF PORT TOWNSEND, DEPT. OF
PUBLIC WORKS AND HAS BEEN ACCEPTED AND USED FOR BOUNDARY SURVEYS IN
PORT TOWNSEND.

1007, 0010321

NORTH QUARTER CORNER SECTION 3 (A-15)

ACCEPTED CORNER:

EVIDENCE FOUND: APRIL 14, 1997
MONUMENT IS 3 1/2"X 3 1/2" CONCRETE POST WITH 1 1/4" DIAM. ROUND LEAD PLUG
WITH AN "X" MARK WITH PUNCH MARK IN CENTER OF "X". MONUMENT IS EXPOSED 10"
ABOVE GROUND AND IS LOCATED IN FORESTED AREA.

CORNER RESTORATION:

THIS POSITION ACCEPTED AS POINT OF LOCAL CONTROL PER SECTION 6-28 OF "MANUAL
OF INSTRUCTIONS FOR THE SURVEY OF THE PUBLIC LANDS OF THE UNITED STATES 1973"
BY BUREAU OF LAND MANAGEMENT.

RECOVERY HISTORY:

DATE UNKNOWN - JEFFERSON COUNTY NOTES REPORT THIS CORNER AS A CONCRETE
MONUMENT.

COMMON DESCRIPTION AMONG THE SURVEYS FOR THIS CORNER IS "CONCRETE MONUMENT".
THE MONUMENT APPEARS ON THE FOLLOWING MAPS OF RECORD:

RECORDS OF SURVEY - VOL. 2, PG. 67, ANDERSON L.S., 1977;

VOL. 7, PG. 93, FISHER L.S., 1985;

VOL. 9, PG. 29, CARMAN L.S., 1987;

SHORT PLATS - VOL. 2, PG. 37, E.E.ANDERSON L.S., 1983;

THIS MONUMENT IS ALSO SHOWN ON THE UNRECORDED SURVEY "PORT TOWNSEND STREET
MONUMENTATION" PREPARED BY E.E. ANDERSON, L.S., FOR THE CITY OF PORT TOWNSEND
IN 1970'S. THIS SURVEY IS ON FILE WITH THE CITY OF PORT TOWNSEND, DEPT. OF
PUBLIC WORKS AND HAS BEEN ACCEPTED AND USED FOR BOUNDARY SURVEYS IN
PORT TOWNSEND.

SECTION 4, T30N, R1W, W.M.

803, 0010421

NORTH QUARTER CORNER SECTION 4 (A-11)

ACCEPTED CORNER:

EVIDENCE FOUND: DECEMBER 4, 1996
MONUMENT IS 2 1/2" O. DIAM. IRON PIPE FILLED WITH CONCRETE WITH COPPER PIN IN
CENTER. THE MONUMENT IS EXPOSED 6" ABOVE THE GROUND.
FOUND 3 RP'S ESTABLISHED BY DNR PER R.O.S. VOL. 17, PG. 65.

CORNER RESTORATION:

THIS POSITION ACCEPTED AS POINT OF LOCAL CONTROL PER SECTION 6-28 OF "MANUAL
OF INSTRUCTIONS FOR THE SURVEY OF THE PUBLIC LANDS OF THE UNITED STATES 1973"
BY BUREAU OF LAND MANAGEMENT.

RECOVERY HISTORY:

COMMON DESCRIPTION AMONG THE SURVEYS FOR THIS CORNER IS "IRON PIPE". THE SIZE
OF THE PIPE VARIES FROM 1" TO 2" DIAM.

THE MONUMENT APPEARS ON THE FOLLOWING MAPS OF RECORD:

RECORDS OF SURVEY - VOL. 2, PG. 23, ANDERSON L.S.; VOL.2, PG. 218, DUBACK L.S.;

VOL. 8, PG. 61, FISHER L.S., 1986; VOL. 10, PG. 36, WINTERS L.S., 1987;

VOL. 16, PG. 83, WALTERS, L.S., 1994; VOL. 17, PG. 65, PURNELL, L.S., 1995 FOR

WASH. STATE DEPARTMENT OF NATURAL RESOURCES (THIS SURVEY LISTS NUMBER OF

OTHER SURVEYS OF RECORD ACCEPTING THIS MONUMENT)

THIS MONUMENT IS ALSO SHOWN ON THE UNRECORDED SURVEY "PORT TOWNSEND STREET

MONUMENTATION" PREPARED BY E.E. ANDERSON, L.S., FOR THE CITY OF PORT TOWNSEND

IN 1970'S. THIS SURVEY IS ON FILE WITH THE CITY OF PORT TOWNSEND, DEPT. OF

PUBLIC WORKS AND HAS BEEN ACCEPTED AND USED FOR BOUNDARY SURVEYS IN

PORT TOWNSEND.

1016, 0010411

NORTHEAST CORNER SECTION 4 (A-13)

ACCEPTED CORNER:

EVIDENCE FOUND: FEBRUARY 27, 1997
MONUMENT IS A 4 1/2" X 4 1/2" CONCRETE POST EXPOSED 4" ABOVE GROUND. MONUMENT
HAS "U.S.E.D." ENGRAVED ON SOUTH SIDE OF TOP, A 1" DIAM. BOLT HEAD AT THE NW
CORNER OF THE TOP. MASONRY SCREW WITH 1/2" DIAM. PHILLIPS HEAD IN THE CENTER
TOP, THIS POSITION USED FOR MEASUREMENT.

CORNER RESTORATION:

THIS POSITION ACCEPTED AS POINT OF LOCAL CONTROL PER SECTION 6-28 OF "MANUAL
OF INSTRUCTIONS FOR THE SURVEY OF THE PUBLIC LANDS OF THE UNITED STATES 1973"
BY BUREAU OF LAND MANAGEMENT.

RECOVERY HISTORY:

COMMON DESCRIPTION AMONG THE SURVEYS FOR THIS CORNER IS "CONCRETE MONUMENT".
THE MONUMENT APPEARS ON THE FOLLOWING MAPS OF RECORD:

RECORDS OF SURVEY - VOL. 2, PG. 67, ANDERSON L.S., 1977;

VOL. 7, PG. 93, FISHER L.S., 1985; VOL. 11, PG. 240, CARMEN L.S., 1990;

VOL. 16, PG. 83, WALTERS L.S., 1994;

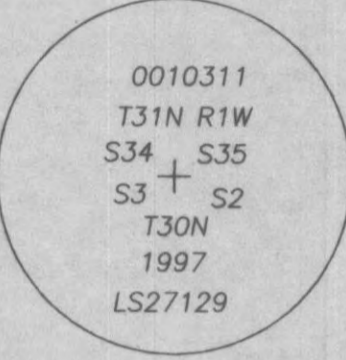
THIS MONUMENT IS ALSO SHOWN ON THE UNRECORDED SURVEY "PORT TOWNSEND STREET

MONUMENTATION" PREPARED BY E.E. ANDERSON, L.S., FOR THE CITY OF PORT TOWNSEND

IN 1970'S. THIS SURVEY IS ON FILE WITH THE CITY OF PORT TOWNSEND, DEPT. OF

PUBLIC WORKS AND HAS BEEN ACCEPTED AND USED FOR BOUNDARY SURVEYS IN

PORT TOWNSEND.



X:\disc\data\92325\F05m\slc

GENERAL LAND OFFICE SURVEY HISTORY:
THE ORIGINAL G.L.O. SURVEY AND SUBDIVISION OF TOWNSHIP 30 NORTH,
RANGE 1 WEST, W.M., WAS PERFORMED BY JOHN TRUTCH, DEPUTY SURVEYOR,
UNDER CONTRACT NO. 33, DATED APRIL 1858. NO ORIGINAL EVIDENCE HAS
BEEN RECOVERED FOR CORNER POSITIONS DOCUMENTED BY THIS SURVEY,
UNLESS OTHERWISE NOTED UNDER "SECTION CORNER NOTES".

RECORD OF SURVEY GEODETIC CONTROL NETWORK AND MONUMENTATION PLAN

FOR
CITY OF PORT TOWNSEND, JEFFERSON COUNTY, WASHINGTON

SECTION CORNER NOTES

SECTION 4, T30N, R1W, W.M.

306, 0010431

CENTER QUARTER CORNER SECTION 4 (C-11)

ACCEPTED CORNER:
EVIDENCE FOUND: NOVEMBER 12, 1996
MONUMENT IS 2 1/2" DIAM. IRON PIPE FILLED WITH CONCRETE WITH COPPER PIN AT
CENTER. THE MONUMENT IS EXPOSED 3" ABOVE GROUND AND IS SET UNDERNEATH WOOD
RAIL FENCE.

CORNER RESTORATION:
THIS CORNER NOT ORIGINALLY SET BY G.L.O. THIS POSITION ACCEPTED AS POINT OF
LOCAL CONTROL PER SECTION 6-28 OF "MANUAL OF INSTRUCTIONS FOR THE SURVEY OF
THE PUBLIC LANDS OF THE UNITED STATES 1973" BY BUREAU OF LAND MANAGEMENT.
RECOVERY HISTORY:
ORIGIN OF THE MONUMENT UNKNOWN. COMMON DESCRIPTION AMONG THE SURVEYS FOR
THIS CORNER IS "2" IRON PIPE".
THE MONUMENT HAS BEEN ACCEPTED AS CENTER QUARTER CORNER OF SEC. 4 AND APPEARS
ON THE FOLLOWING MAPS OF RECORD:
RECORDS OF SURVEY - VOL. 1, PG. 183, DUBACK L.S. 1976;
VOL. 7, PG. 90, FISHER L.S., 1985; VOL. 10, PG. 105, WINTERS L.S., 1989;
VOL. 12, PG. 85, CUMMINS, L.S., 1991;
OTHER SURVEYS OF RECORD ACCEPT LOCATION OF THIS MONUMENT AS CENTER 1/4 COR.
SEC. 4. PRIVATE RECORDS OF E. E. ANDERSON L.S. AND F. FISHER L.S. DATED 1976
SHOW AND USE THIS MONUMENT AS CENTER 1/4 COR. SEC.4.
THIS MONUMENT IS ALSO SHOWN ON THE UNRECORDED SURVEY "PORT TOWNSEND STREET
MONUMENTATION" PREPARED BY E.E. ANDERSON, L.S., FOR THE CITY OF PORT TOWNSEND
IN 1970'S. THIS SURVEY IS ON FILE WITH THE CITY OF PORT TOWNSEND, DEPT. OF
PUBLIC WORKS AND HAS BEEN ACCEPTED AND USED FOR BOUNDARY SURVEYS IN
PORT TOWNSEND.

5, 0010441

EAST QUARTER CORNER SECTION 4 (C-13)

ACCEPTED CORNER:
EVIDENCE FOUND: NOVEMBER 18, 1996
MONUMENT IS 3 1/2" X 3 1/2" CONCRETE POST WITH 1 1/2" LEAD PLUG WITH PUNCH
HOLE. THE MONUMENT IS EXPOSED 1.1' ABOVE GROUND AND IS SET AT FENCE CORNER.

CORNER RESTORATION:
THIS POSITION ACCEPTED AS POINT OF LOCAL CONTROL PER SECTION 6-28 OF "MANUAL OF
THE PUBLIC LANDS OF THE UNITED STATES 1973" BY BUREAU OF LAND MANAGEMENT.
RECOVERY HISTORY:
1940 - JEFFERSON COUNTY RECORDS (SURVEY NOTES) INDICATE "1/4 CORNER COMMON TO
SEC. 3 - 4 SET BY ARMSTRONG".
COMMON DESCRIPTION AMONG THE SURVEYS FOR THIS CORNER IS "CONCRETE MONUMENT".
THE MONUMENT HAS BEEN ACCEPTED AS QUARTER CORNER TO SEC. 4 AND 3 AND APPEARS
ON THE FOLLOWING MAPS OF RECORD:
RECORDS OF SURVEY - VOL. 1, PG. 183, DUBACK L.S. 1976;
VOL. 7, PG. 53, FISHER L.S., 1985; VOL. 9, PG. 159, WINTERS L.S., 1988;
OTHER SURVEYS OF RECORD ACCEPT THIS MONUMENT AS 1/4 COR. TO SEC. 4 AND 3.
PRIVATE RECORDS OF E.E. ANDERSON L.S. AND F. FISHER L.S. DATED 1976 SHOW AND
ACCEPT THIS MONUMENT AS 1/4 COR. TO SEC. 4 AND 3.
THIS MONUMENT IS ALSO SHOWN ON THE UNRECORDED SURVEY "PORT TOWNSEND STREET
MONUMENTATION" PREPARED BY E.E. ANDERSON, L.S., FOR THE CITY OF PORT TOWNSEND
IN 1970'S. THIS SURVEY IS ON FILE WITH THE CITY OF PORT TOWNSEND, DEPT. OF
PUBLIC WORKS AND HAS BEEN ACCEPTED AND USED FOR BOUNDARY SURVEYS IN
PORT TOWNSEND.

SECTION 9, T30N, R1W, W.M.

311, 0010811

NORTHEAST CORNER SECTION 8 (NORTHWEST CORNER SECTION 9, E-9)

ACCEPTED CORNER:
EVIDENCE FOUND: NOVEMBER 18, 1996
MONUMENT IS 4" X 4" CONCRETE POST WITH 1 1/2" DIAM. BRASS CAP WITH CENTER
PUNCH MARK. THE MONUMENT IS EXPOSED 6" ABOVE GROUND AND IS LEANING SOUTHERLY,
BUT IS SET FIRMLY IN IT'S POSITION. MONUMENT RECOVERED IN A GOOD CONDITIONS.
FOUND 3 RP'S (TREES) ESTABLISHED BY DNR PER R.O.S. VOL. 17, P. 10. MONUMENT
IS IN THE SOUTH TIRE TRACK OF UNIMPROVED ROAD.
MARCH 4, 1997 - RESET THE MONUMENT IN THE SAME POSITION. MONUMENT IS NOW SET
IN CONCRETE IN STEEL CASE. THE TOP OF THE CASE IS 0.3' BELOW GROUND, TOP OF THE
MONUMENT IS 0.4' BELOW CASE LID.

CORNER RESTORATION:
THIS POSITION ACCEPTED AS POINT OF LOCAL CONTROL PER SECTION 6-28 OF "MANUAL
OF INSTRUCTIONS FOR THE SURVEY OF THE PUBLIC LANDS OF THE UNITED STATES 1973"
BY BUREAU OF LAND MANAGEMENT.
RECOVERY HISTORY:
PRIVATE RECORDS OF E. E. ANDERSON, L.S. AND F. FISHER, L.S. DATED 1976 INDICATE
"FC PAROLE EVIDENCE".
R.O.S. VOL. 1 PG. 183, DUBACK L.S. 15647, 10/1976 SHOWS " SET CONCRETE
MONUMENT PER PAROLE EVIDENCE ON FENCE CORNER"
COMMON DESCRIPTION AMONG THE SURVEYS FOR THIS CORNER IS "CONCRETE POST/
MONUMENT ". THE MONUMENT APPEARS ON THE FOLLOWING MAPS OF RECORD:
RECORDS OF SURVEY - VOL. 2, PG. 172, ANDERSON L.S. 1978;
VOL. 4, PG. 28, CLARK L.S., 1980; VOL. 8, PG. 61, FISHER L.S., 1986;
VOL. 12, PG. 32, NESARY, L.S., 1991; VOL. 17, PG. 10, PURNELL, L.S., 1995 FOR
WASH. STATE DEPARTMENT OF NATURAL RESOURCES. THIS SURVEY LISTS NUMBER OF
OTHER SURVEYS OF RECORD ACCEPTING THIS MONUMENT.

706, 0010911

NORTHEAST CORNER SECTION 9 (E-13)

ACCEPTED CORNER:
EVIDENCE FOUND: NOVEMBER 14, 1996
MONUMENT IS 3 1/2" X 2 3/4" STEEL PLATE WELDED ON A 1/2" REBAR. PLATE HAS
LETTERS "SE3" WELDED TO IT. PLATE IS FLUSH WITH THE GROUND. MONUMENT RECOVERED
IN GOOD CONDITIONS.
FEBRUARY 24, 1997 - REPLACED THE ABOVE DESCRIBED MONUMENT WITH STANDARD
MONUMENT PER PROJECT SPECIFICATIONS (SEE. SH. 5 OF THIS SURVEY). THE BRASS
CAP IS STAMPED AS SHOWN.

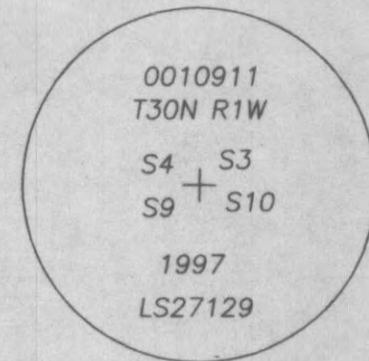
CORNER RESTORATION:
THIS POSITION IS ACCEPTED AS POINT OF LOCAL CONTROL PER SECTION 6-28 OF "MANUAL
OF INSTRUCTIONS FOR THE SURVEY OF THE PUBLIC LANDS OF THE UNITED STATES 1973"
BY BUREAU OF LAND MANAGEMENT.
RECOVERY HISTORY:
1941, 1942 COUNTY RECORDS - SURVEY NOTES REFER TO "CONCRETE MONUMENT" SET BY
BY "STATE ENGINEERS".
COMMON DESCRIPTION AMONG THE SURVEYS FOR THIS CORNER SINCE 1976 IS
"STEEL PLATE ON IRON ROD", ORIGIN OF THIS MONUMENT UNKNOWN.
THE MONUMENT APPEARS ON THE FOLLOWING MAPS OF RECORD:
RECORDS OF SURVEY - VOL. 1, PG. 182, DUBACK, L.S. 1976;
VOL. 3, PG. 132, ANDERSON L.S. 1978;
VOL. 7, PG. 44, FISHER L.S., 1984; VOL. 17, PG. 65, PURNELL, L.S., 1995 FOR
WASH. STATE DEPARTMENT OF NATURAL RESOURCES (THIS SURVEY LISTS NUMBER OF
OTHER SURVEYS OF RECORD ACCEPTING THIS MONUMENT)
THIS MONUMENT IS ALSO SHOWN ON THE UNRECORDED SURVEY "PORT TOWNSEND STREET
MONUMENTATION" PREPARED BY E. E. ANDERSON, L.S., FOR THE CITY OF PORT
TOWNSEND IN 1970'S. THIS SURVEY IS ON FILE WITH THE CITY OF PORT TOWNSEND,
DEPT. OF PUBLIC WORKS AND HAS BEEN ACCEPTED AND USED FOR BOUNDARY SURVEYS
IN PORT TOWNSEND.

2, 0010841

EAST QUARTER CORNER SECTION 8 (G-9)
(WEST QUARTER CORNER SECTION 9)

ACCEPTED CORNER:
EVIDENCE FOUND: NOV. 23, 1996
MONUMENT IS 4" I. DIAM. IRON PIPE FILLED WITH CONCRETE WITH BRASS NAIL AT
THE CENTER. THE MONUMENT IS FLUSH WITH THE GROUND AT CORNER OF FIELD BETWEEN
TWO FENCE LINES. MONUMENT IN GOOD CONDITIONS.
FOUND 2 RP'S (TREES) ESTABLISHED BY DNR PER R.O.S. VOL. 17, PG. 65.

CORNER RESTORATION:
THIS POSITION ACCEPTED AS POINT OF LOCAL CONTROL PER SECTION 5-5 AND 6-28 OF
"MANUAL OF INSTRUCTIONS FOR THE SURVEY OF THE PUBLIC LANDS OF THE UNITED
STATES 1973" BY BUREAU OF LAND MANAGEMENT.
RECOVERY HISTORY:
2/1942 - JEFFERSON COUNTY SURVEY NOTES REFER TO "IRON PIPE CONCRETE FILLED".
COMMON DESCRIPTION AMONG THE SURVEYS FOR THIS CORNER IS "IRON PIPE WITH
CONCRETE". THE SIZE OF THE PIPE VARIES FROM 2" TO 6" DIAM.
THE MONUMENT APPEARS ON THE FOLLOWING MAPS OF RECORD:
RECORDS OF SURVEY - VOL.1, PG. 182, DUBACK L.S., 1978;
VOL. 3, PG. 132, ANDERSON L.S., 1978; VOL. 8, PG. 176, FISHER L.S., 1987;
VOL. 13, P.128, NESARY L.S., 1992;
VOL. 17, PG. 65, PURNELL, L.S., 1995 FOR WASH. STATE DEPARTMENT OF NATURAL
RESOURCES. THIS SURVEY REPORTS "DUFFY REMAINS AT GLO BEARING AND DISTANCE"
FOR ORIG. BEARING TREE AT N 78°E, 66 LKS (43.6'). THIS SURVEY ALSO LISTS
NUMBER OF OTHER SURVEYS OF RECORD ACCEPTING THIS MONUMENT. THIS MONUMENT IS
INCLUDED IN A PRIVATE RECORDS OF E. E. ANDERSON L.S. AND F. FISHER L.S.
DATED 1976.



X:\disc\data\92325\ROCsm\sh.

GENERAL LAND OFFICE SURVEY HISTORY:
THE ORIGINAL G.L.O. SURVEY AND SUBDIVISION OF TOWNSHIP 30 NORTH,
RANGE 1 WEST, W.M., WAS PERFORMED BY JOHN TRUTCH, DEPUTY SURVEYOR,
UNDER CONTRACT NO. 33, DATED APRIL 1858. NO ORIGINAL EVIDENCE HAS
BEEN RECOVERED FOR CORNER POSITIONS DOCUMENTED BY THIS SURVEY,
UNLESS OTHERWISE NOTED UNDER "SECTION CORNER NOTES".

RECORD OF SURVEY GEODETIC CONTROL NETWORK AND MONUMENTATION PLAN

FOR
CITY OF PORT TOWNSEND, JEFFERSON COUNTY, WASHINGTON

SECTION CORNER NOTES

SECTION 9, T30N, R1W, W.M.

EAST QUARTER CORNER SECTION 9 (G-13)

ACCEPTED CORNER:
EVIDENCE FOUND: NOV. 23, 1996
NO EVIDENCE OF THE CORNER OR ITS ACCESSORY FOUND. NO MONUMENT SET.

CORNER RESTORATION:
THIS CORNER IS DETERMINED LOST PER SECTION 5-20 OF "MANUAL OF INSTRUCTIONS FOR THE SURVEY OF THE PUBLIC LANDS OF THE UNITED STATES 1973" BY BUREAU OF LAND MANAGEMENT.
RECOVERY HISTORY:
NO HISTORY OF RECOVERY OF THIS CORNER FOUND. SURVEYS OF RECORD DETERMINE THIS CORNER AS LOST.
THIS CORNER DETERMINED LOST WITH IT'S POSITION CALCULATED AT MID-POINT ON LINE BETWEEN CORNERS NORTH AND SOUTH APPEARS ON THE FOLLOWING MAPS OF RECORD:
RECORDS OF SURVEY - VOL. 1, PG. 182, DUBACK L.S., 1978;
VOL. 2, PG. 172, ANDERSON L.S., 1976; VOL. 8, PG. 176, FISHER L.S., 1987;
VOL. 17, PG. 65, PURNELL, L.S., 1995 FOR WASH. STATE DEPARTMENT OF NATURAL RESOURCES (THIS SURVEY LISTS NUMBER OF OTHER SURVEYS OF RECORD CONFIRMING THIS CONCLUSION).
THE POSITION FOR THIS CORNER IS ALSO SHOWN AS CALCULATED AT MID-POINT ON LINE BETWEEN CORNERS NORTH AND SOUTH ON THE UNRECORDED SURVEY "PORT TOWNSEND MONUMENTATION" PREPARED BY E.E. ANDERSON, L.S., FOR THE CITY OF PORT TOWNSEND IN 1970'S. THIS SURVEY IS ON FILE WITH THE CITY OF PORT TOWNSEND, DEPT. OF PUBLIC WORKS, AND HAS BEEN ACCEPTED AND USED FOR BOUNDARY SURVEYS IN PORT TOWNSEND.

1. 0011711

NORTHEAST CORNER SECTION 17 (J-9)
(SOUTHWEST CORNER SECTION 9)

ACCEPTED CORNER:
EVIDENCE FOUND: NOV. 12, 1996
THE MONUMENT IS 3 1/2" X 3 1/2" CONCRETE POST WITH PUNCH MARK IN CENTER. MONUMENT IS EXPOSED 1' ABOVE GROUND AND IS LOCATED 26' NORTH FROM THE NORTH EDGE OF THE PAVEMENT OF GUN CLUB RD.

CORNER RESTORATION:
THIS POSITION ACCEPTED AS POINT OF LOCAL CONTROL PER SECTION 6-28 OF "MANUAL OF INSTRUCTIONS FOR THE SURVEY OF THE PUBLIC LANDS OF THE UNITED STATES 1973" BY BUREAU OF LAND MANAGEMENT.
RECOVERY HISTORY:
DEC. 1940 - JEFFERSON COUNTY SURVEY NOTES SHOW " SET CONCRETE POST REPLACING WOODEN POST".
NOV. 1981 - JEFFERSON COUNTY SURVEY NOTES (LCR) REPORT "RESET EXISTING 4" X 4" CONC. POST".
PRIVATE RECORDS OF E. E. ANDERSON L.S., F. FISHER L.S. DATED 1976 INDICATE "CON. MON."
COMMON DESCRIPTION AMONG THE SURVEYS FOR THIS CORNER IS "4" X 4" CONCRETE POST. THE MONUMENT APPEARS ON THE FOLLOWING MAPS OF RECORD:
RECORDS OF SURVEY - VOL. 1 PG. 196 SANSTROM, L.S.
VOL. 2, PG. 172, ANDERSON L.S., 1978; VOL. 7, PG. 93, FISHER L.S., 1985;
VOL. 17, PG. 10 PURNELL, L.S. 1995 FOR WASH. ST. DEPT. OF NATURAL RESOURCES (THIS SURVEY LISTS NUMBER OF OTHER SURVEYS OF RECORD ACCEPTING THIS MONUMENT).

602. 0011621

NORTH QUARTER CORNER SECTION 16 (J-11)
(SOUTH QUARTER CORNER SECTION 9)

ACCEPTED CORNER:
EVIDENCE FOUND: NOV. 14, 1996
6" X 8" SANDSTONE MONUMENT WITH A 1/2" DIAM. BRASS PLUG. THE MONUMENT HAS LETTERS " JC " SCRIBED IN TOP FACE. THE MONUMENT IS FLUSH WITH THE GROUND AND IS LOCATED IN A YOUNG FIR STAND. RECOVERED IN GOOD CONDITIONS. FOUND RP'S (TREES) ESTABLISHED BY DNR PER R.O.S. VOL. 17, PG. 10.
CORNER RESTORATION:
THIS POSITION ACCEPTED AS POINT OF LOCAL CONTROL PER SECTION 6-28 OF "MANUAL OF INSTRUCTIONS FOR THE SURVEY OF THE PUBLIC LANDS OF THE UNITED STATES 1973" BY BUREAU OF LAND MANAGEMENT.
RECOVERY HISTORY:
DATE UNKNOWN - JEFFERSON CO. ENG. OFFICE SURVEY NOTES SHOW " 6" X 8" STONE WITH COPPER BOLT CENTERED".
DEC. 1940 - JEFFERSON CO. ENG. OFFICE SURVEY NOTES SHOW " 6" X 8" CONCRETE MONUMENT WITH COPPER PLUG CENTERED, NO REPLACEMENT"

PRIVATE RECORDS OF E.E. ANDERSON L.S., F. FISHER L.S. DATED 1976 INDICATE " SANDSTONE MONUMENT "
COMMON DESCRIPTION AMONG THE SURVEYS FOR THIS CORNER IS A "SANDSTONE MONUMENT" THIS MONUMENT APPEARS ON THE FOLLOWING MAPS OF RECORD:
RECORDS OF SURVEY - VOL. 1 PG. 182 DUBACK, L.S., 1976;
VOL. 3, PG. 185, ANDERSON L.S., 1979; VOL. 8, PG. 176, FISHER L.S., 1987;
VOL. 13 PG. 128, NESARY L.S., 1992; VOL. 17, PG. 10 PURNELL, L.S. 1995 FOR THE WASH. ST. DEPT. OF NATURAL RESOURCES (THIS SURVEY LISTS NUMBER OF OTHER SURVEYS OF RECORD ACCEPTING THIS MONUMENT).
THIS CORNER IS ALSO SHOWN AS "SANDSTONE MONUMENT" ON THE UNRECORDED SURVEY "PORT TOWNSEND STREET MONUMENTATION" PREPARED BY E. E. ANDERSON, L.S., IN 1970'S FOR THE CITY OF PORT TOWNSEND. THIS SURVEY IS ON FILE WITH CITY OF PORT TOWNSEND, DEPT. OF PUBLIC WORKS, AND HAS BEEN ACCEPTED AND USED FOR BOUNDARY SURVEYS IN PORT TOWNSEND.

11. 0011611

NORTHEAST CORNER SECTION 16 (J-13)
(SOUTHEAST CORNER SECTION 9)

ACCEPTED CORNER:
EVIDENCE FOUND: DEC. 12, 1996
MONUMENT IS 4" X 4" CONCRETE POST, NO CAP OR PUNCH ON THE TOP. THE MONUMENT IS EXPOSED 1.5' ABOVE THE GROUND AND LOCATED AT E - W TREE LINE. MONUMENT RECOVERED IN GOOD CONDITIONS. FOUND RP'S (TREES) ESTABLISHED BY DNR PER R.O.S. VOL. 17, PG. 10.
CORNER RESTORATION:
THIS POSITION ACCEPTED AS POINT OF LOCAL CONTROL PER SECTION 6-28 OF "MANUAL OF INSTRUCTIONS FOR THE SURVEY OF THE PUBLIC LANDS OF THE UNITED STATES 1973" BY BUREAU OF LAND MANAGEMENT.
RECOVERY HISTORY:
12/6/40 - JEFFERSON CO. ENG. OFFICE SURVEY NOTES SHOW "CONCRETE POST REPLACING CEDAR POST".
1/26/55 - JEFFERSON CO. ENG. OFFICE SURVEY NOTES SHOW "CONCRETE POST REPLACING WOODEN POST" AND REFER TO "FLD. BK. 300 MARCH 14, 1929".
PRIVATE RECORDS OF E.E. ANDERSON L.S., F. FISHER L.S. DATED 1976 INDICATE " CON. MON."
COMMON DESCRIPTION AMONG THE SURVEYS FOR THIS CORNER IS A "CONCRETE MONUMENT" THIS MONUMENT APPEARS ON THE FOLLOWING MAPS OF RECORD:
RECORDS OF SURVEY - VOL. 2 PG. 172 ANDERSON, L.S., 1978;
VOL. 8, PG. 176, FISHER L.S., 1987; VOL. 13 PG. 189, NESARY L.S., 1992;
VOL. 17, PG. 10 PURNELL, L.S. 1995 FOR THE WASH. ST. DEPT. OF NATURAL RESOURCES (THIS SURVEY LISTS NUMBER OF OTHER SURVEYS OF RECORD ACCEPTING THIS MONUMENT).
THIS CORNER IS ALSO SHOWN AS "CONCRETE MONUMENT" ON THE UNRECORDED SURVEY "PORT TOWNSEND STREET MONUMENTATION" PREPARED BY E. E. ANDERSON, L.S., IN 1970'S FOR THE CITY OF PORT TOWNSEND. THIS SURVEY IS ON FILE WITH CITY OF PORT TOWNSEND, DEPT. OF PUBLIC WORKS, AND HAS BEEN ACCEPTED AND USED FOR BOUNDARY SURVEYS IN PORT TOWNSEND.
NOTE: ALL MEASUREMENTS TO THE TOP CENTER OF THE MONUMENT.

SECTION 10, T30N, R1W, W.M.

NORTH QUARTER CORNER SECTION 10 (E-15)

ACCEPTED CORNER:
EVIDENCE FOUND: DEC. 2, 1996
NO EVIDENCE OF THE CORNER OR IT'S ACCESSORY FOUND.
CORNER RESTORATION:
THIS CORNER IS DETERMINED LOST PER SECTION 5-20 OF "MANUAL OF INSTRUCTIONS FOR THE SURVEY OF THE PUBLIC LANDS OF THE UNITED STATES 1973" BY BUREAU OF LAND MANAGEMENT.
RECOVERY HISTORY:
CORNER ORIGINALLY ESTABLISHED BY G.L.O. AT MID-POINT (40 CH) BETWEEN CORNERS EAST AND WEST.
NO RECORD OF RECOVERY OF THIS CORNER FOUND. POSITION FOR THIS CORNER CALCULATED AT MID-POINT BETWEEN THE CORNERS EAST AND WEST. NO MONUMENT SET. THE CORNER FALLS WITHIN DEVELOPED AREA OF THE PLAT OF EISENBEIS ADDITION TO THE CITY OF PORT TOWNSEND, VOL. 2, PG. 24, 1889. THIS PLAT AND THE UNRECORDED SURVEY "PORT TOWNSEND MONUMENTATION" PREPARED BY E. E. ANDERSON, L.S., FOR THE CITY OF PORT TOWNSEND IN 1970'S SHOW STRAIGHT LINE BETWEEN CORNERS EAST AND WEST WITHOUT ESTABLISHING POSITION FOR THIS CORNER. THIS SURVEY IS ON FILE WITH THE CITY OF PORT TOWNSEND, DEPT. OF PUBLIC WORKS, AND HAS BEEN ACCEPTED AND USED FOR BOUNDARY SURVEYS IN PORT TOWNSEND.

507. 0011047

MEANDER CORNER SECTIONS 10 AND 11

ACCEPTED CORNER:
EVIDENCE FOUND: APRIL 14, 1997
MONUMENT IS A 1 3/4" DIAM. DOMED BRASS DISK SET FLUSH WITH CONCRETE FLOOR OF ENCLOSED BOAT REPAIR BUILDING OCCUPIED BY "JONES AND SONS BOAT REPAIR".
CORNER RESTORATION:
THIS POSITION ACCEPTED AS POINT OF LOCAL CONTROL PER SECTION 6-28 OF "MANUAL OF INSTRUCTIONS FOR THE SURVEY OF THE PUBLIC LANDS OF THE UNITED STATES 1973" BY BUREAU OF LAND MANAGEMENT.
RECOVERY HISTORY:
THIS CORNER IS SHOWN AND DESCRIBED AS " M. C. BRASS CAP IN FLOOR OF SKOOKUM BLDG. " ON THE UNRECORDED SURVEY "PORT TOWNSEND STREET MONUMENTATION" PREPARED BY E.E. ANDERSON, L.S., IN 1970'S FOR THE CITY OF PORT TOWNSEND. THIS SURVEY IS ON FILE WITH CITY OF PORT TOWNSEND, DEPT. OF PUBLIC WORKS, AND HAS BEEN ACCEPTED AND USED FOR BOUNDARY SURVEYS IN PORT TOWNSEND.
NOTE: ALL MEASUREMENTS TO THE TOP CENTER OF THE MONUMENT.



RECORD OF SURVEY GEODETIC CONTROL NETWORK AND MONUMENTATION PLAN

FOR
CITY OF PORT TOWNSEND, JEFFERSON COUNTY, WASHINGTON

SECTION CORNER NOTES

SECTION 9, T30N, R1W, W.M.
NORTH QUARTER CORNER SECTION 9 (E-11)

EVIDENCE FOUND: NOV. 11, 1996
FOUND 4" X 4" CONCRETE MONUMENT WITH 1 5/8" DIAM. BRASS CAP STAMPED AS SHOWN AT APPROXIMATE CORNER LOCATION. THE MONUMENT IS EXPOSED 0.35' ABOVE GROUND AND IS LOCATED 1.3' SOUTHEAST FROM THE CYCLONE FENCE CORNER POST.

CORNER RESTORATION:
THE MONUMENT FOUND IS NOT OF RECORD, AND IS NOT ACCEPTED AS NORTH QUARTER CORNER OF SECTION 9.
THE QUARTER CORNER IS DETERMINED OBLITERATED PER SECTION 5-9 OF "MANUAL OF INSTRUCTIONS FOR THE SURVEY OF THE PUBLIC LANDS OF THE UNITED STATES 1973" BY BUREAU OF LAND MANAGEMENT.

RECOVERY HISTORY:
CORNER ORIGINALLY ESTABLISHED BY G.L.O. AT MID-POINT (40.28 CH) BETWEEN CORNERS EAST AND WEST.
PRIVATE RECORDS OF E.E. ANDERSON L.S., F. FISHER L.S. INDICATE:
- AN UNDATED NOTES "FROM OLD CITY MAP, ORIGIN UNKNOWN" SHOW "FOUND STAKE IN MOUND OF ROCKS".
- TRAVERSE NOTES DATED 5/1977 FOR THE CITY OF PORT TOWNSEND CONTROL PROJECT SHOW "1/4 COR., 4" X 4" X 1' CONC. MON. NEXT TO BELL MANHOLE."
- SECTION SUBDIVISION DIAGRAM FOR SEC. 9, DATED 1977 OR ABOUT SHOWS "CON. MON." AND MEASUREMENTS TO THE CORNERS EAST AND WEST.
- SECTION SUBDIVISION DIAGRAM FOR SEC. 4, DATED 1984 SHOWS "CON. MON. DESTROYED" AND IDENTICAL MEASUREMENTS TO THE CORNERS EAST AND WEST.

- THE UNRECORDED SURVEY "PORT TOWNSEND MONUMENTATION" PREPARED BY E.E. ANDERSON, L.S., FOR THE CITY OF PORT TOWNSEND IN 1970'S SHOWS "FD. CON. MON." AND IDENTICAL MEASUREMENTS TO THE CORNERS EAST AND WEST. THIS SURVEY IS ON FILE WITH THE CITY OF PORT TOWNSEND, DEPT. OF PUBLIC WORKS, AND HAS BEEN ACCEPTED AND USED FOR BOUNDARY SURVEYS IN PORT TOWNSEND.

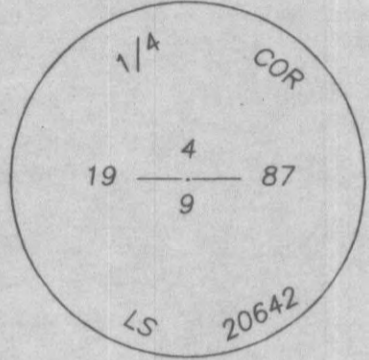
FOLLOWING ARE THE MAPS OF RECORD THAT, AS APPLICABLE, ACCEPT THE MONUMENT AS IDENTIFIED AND TIED BY E.E. ANDERSON, L.S., AND F. FISHER, L.S., LATER REPORTED DESTROYED, AND SUBDIVISION OF SEC. 9 AND 4 BASED ON ITS LOCATION, AND REJECT THE EXISTING MONUMENT FOUND:

- RECORDS OF SURVEY:
VOL. 1, PG. 182, 183, DUBACK L.S., 1976; VOL. 2, PG. 109, DUBACK L.S., 1977; SURVEYS BY E.E. ANDERSON L.S.:
VOL. 2, PG. 172, 1978 (REPORTS "CONC. MON. DESTROYED, SET REBAR FROM PREVIOUS SURVEY"); VOL. 3, PG. 76, 1976; VOL. 3, PG. 132, 1979;
VOL. 3, PG. 185, 1979; VOL. 5, PG. 45 (REPORTS "CONC. MON. DESTROYED BY CONSTRUCTION"), 1981;
SURVEYS BY F. FISHER L.S.:
VOL. 7, PG. 37, 1984; VOL. 7 PG. 44, 1984; VOL. 7, PG. 90, 1985; VOL. 7, PG. 153, 1985; VOL. 8, PG. 176, 1987; VOL. 8, PG. 196, 1987;
OTHER:
VOL. 8, PG. 71, CARMAN L.S., 1986; VOL. 10, PG. 165, WINTERS L.S., 1989;
VOL. 11, PG. 137, WOODS L.S., 1990; VOL. 11, PG. 155, WOODS L.S., 1990;
VOL. 12, PG. 135, WINTERS L.S., 1991; VOL. 13, PG. 128, NESARY L.S., 1992;
VOL. 14, PG. 71, NESARY L.S., 1992; VOL. 14, PG. 119, BROWN L.S., 1993.
SHORT PLAT VOL. 2, PG. 93, CARMAN L.S., 1987.

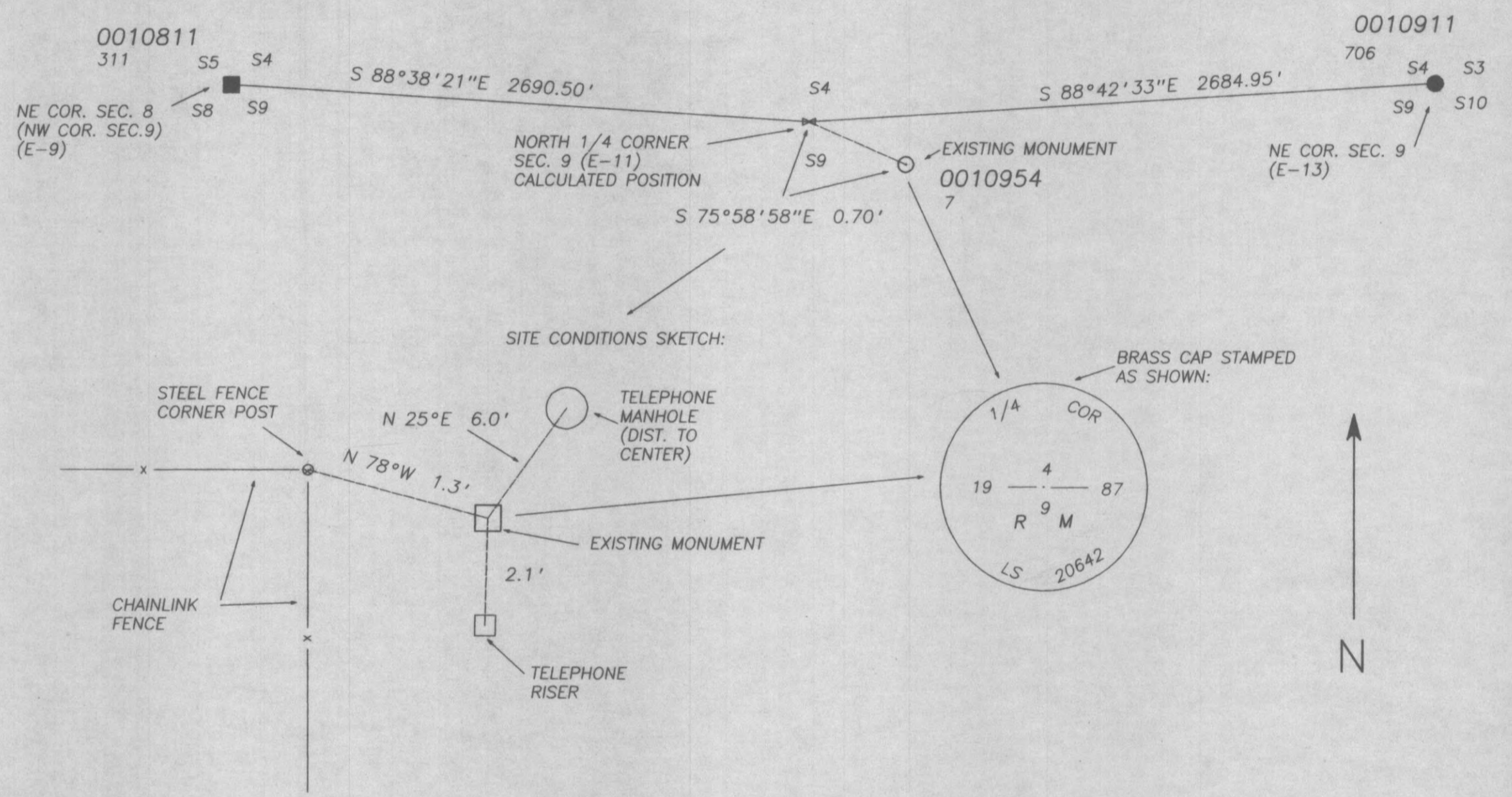
THE EXISTING MONUMENT FOUND APPEARS AS NORTH QUARTER CORNER OF SEC. 9 ON THE FOLLOWING SURVEYS OF RECORD:
VOL. 10, PG. 17, PURNELL L.S., 1995 FOR WASH. ST. DEPT. OF NATURAL RESOURCES.

7. 0010954

THE EXISTING MONUMENT FOUND NOV. 11, 1996 AND DESCRIBED ABOVE (4" X 4" CONCRETE MONUMENT WITH 1 5/8" DIAM. BRASS CAP STAMPED AS SHOWN) IS NOT ACCEPTED AS NORTH QUARTER CORNER OF SEC. 9, AND IS ACCEPTED AND USED AS THE REFERENCE MONUMENT TO THE NORTH QUARTER CORNER OF SEC. 9 PER SECTIONS 4-16, 4-96 OF THE MANUAL OF SURVEYING INSTRUCTIONS 1973 BY BUREAU OF LAND MANAGEMENT. DUE TO THE SITE CONDITIONS THE POSITION FOR THE NORTH QUARTER CORNER IS NOT SUITABLE FOR MONUMENTATION. LETTERS "R. M." ARE STAMPED ON THE BRASS CAP OF THE EXISTING MONUMENT.



NORTH QUARTER CORNER SECTION 9, T30N, R1W, W.M.
DETAIL: (NOT TO SCALE)



X:\disc\data\92325\FWSm\SL0