

TOPOGRAPHIC MAP

9TH STREET FROM McPHERSON ST. TO HANCOCK ST.

CITY OF PORT TOWNSEND JEFFERSON COUNTY, WASHINGTON

PREPARED FOR CITY OF PORT TOWNSEND

BASIS OF BEARINGS:
WASHINGTON COORDINATE SYSTEM OF 1983, ADJUSTMENT 1991,
NORTH ZONE, NORTH AMERICAN DATUM (NAD 83/91).
ESTABLISHED BY FIELD TIES TO CITY OF PORT TOWNSEND
GEODETIC CONTROL POINTS #0010982 AND #0010950.
(SEE VOL. 19 OF SURVEYS, PAGES 61-70 FOR FURTHER
INFORMATION REGARDING GEODETIC CONTROL POINTS.)

VERTICAL DATUM:
NORTH AMERICAN VERTICAL DATUM (NAVD) OF 1988
ESTABLISHED BY FIELD TIES TO CITY OF PORT TOWNSEND
GEODETIC CONTROL POINTS #0010982 AND #0010950.

- LEGEND:** (EXCEPT AS OTHERWISE INDICATED)
- EDGE OF RIGHT OF WAY
 - RIGHT OF WAY CENTERLINE
 - EDGE OF PAVEMENT
 - EDGE OF CONCRETE
 - EDGE OF GRAVEL
 - BUILDING LINE
 - ASBUILT CENTERLINE
 - CULVERT LINE
 - EDGE OF LANDSCAPING
 - FENCE LINE
 - BRUSH LINE
 - DITCH / FLOW LINE
 - TOP BACK CURB LINE
 - GROUND BREAK LINE
 - UNDERGROUND SANITARY SEWER LINE
 - UNDERGROUND WATER LINE
 - OVERHEAD POWER/UTILITY LINE
 - UNDERGROUND POWER LINE
 - INDEX CONTOUR (5 FOOT INTERVAL)
 - CONTOUR (1 FOOT INTERVAL)

PROCEDURES:
THIS SURVEY IS BASED ON A GROUND SURVEY
UTILIZING CONVENTIONAL TRAVERSE METHODS
WITH CLOSURES THAT MEET OR EXCEED THE
STANDARDS CONTAINED IN WAC 332-130-090.

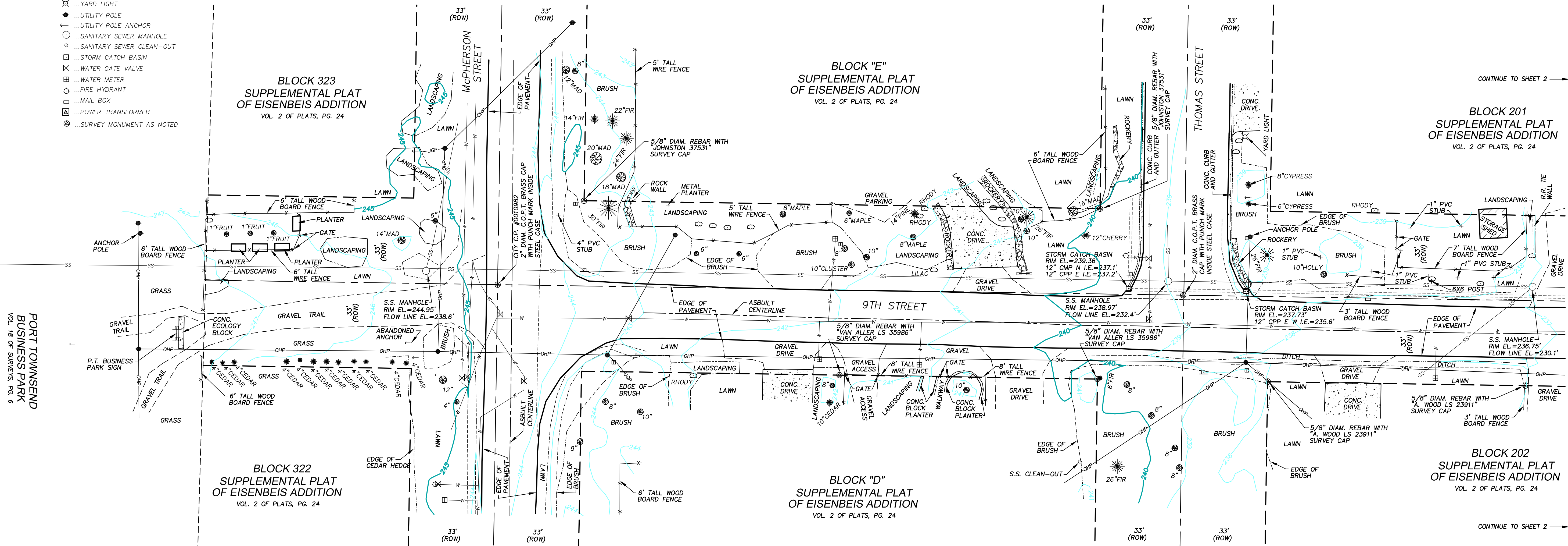
EQUIPMENT:
TRIMBLE S6 3" ROBOTIC TOTAL STATION
TRIMBLE TSC2 DATA COLLECTOR

DATE OF SURVEY:
JULY, 2022

NOTES:

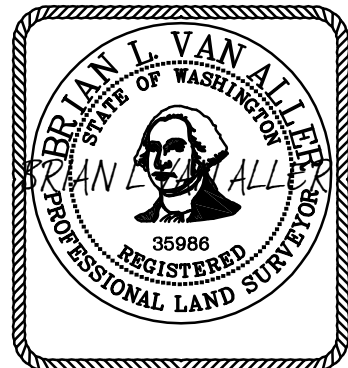
- 1) THIS MAP IS BASED ON FIELD SURVEY
CONDUCTED DURING JULY, 2022
- 2) UNDERGROUND UTILITIES SHOWN HEREON ARE
BASED UPON FIELD MARKINGS PLACED BY OTHERS,
AND MUST BE VERIFIED PRIOR TO CONSTRUCTION.
NO UNDERGROUND TELEPHONE LINES WERE
LOCATED PER ONE-CALL.

- ☉ ...CONIFER TREE, (TRUNK DIAMETER
AND SPECIES IF KNOWN)
- ☉ ...DECIDUOUS TREE, (TRUNK DIAMETER
AND SPECIES IF KNOWN)
- ⊕ ...BUSH / SHRUB
- ⊕ ...SIGN
- ⊕ ...TELEPHONE RISER
- ⊕ ...YARD LIGHT
- ⊕ ...UTILITY POLE
- ⊕ ...UTILITY POLE ANCHOR
- ...SANITARY SEWER MANHOLE
- ...SANITARY SEWER CLEAN-OUT
- ...STORM CATCH BASIN
- ⊕ ...WATER GATE VALVE
- ⊕ ...WATER METER
- ⊕ ...FIRE HYDRANT
- ⊕ ...MAIL BOX
- ⊕ ...POWER TRANSFORMER
- ⊕ ...SURVEY MONUMENT AS NOTED

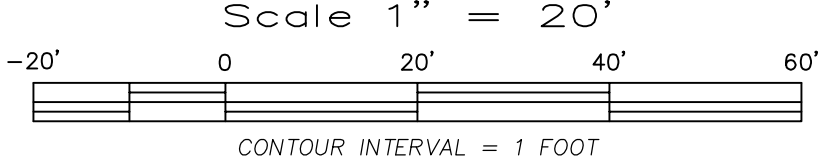


PORT TOWNSEND
BUSINESS PARK
VOL. 18 OF SURVEYS, PG. 6

SURVEYOR'S CERTIFICATE
I HEREBY CERTIFY THAT I AM A PROFESSIONAL LAND SURVEYOR LICENSED TO
PRACTICE IN THE STATE OF WASHINGTON AND DECLARE THAT THIS MAP CORRECTLY
REPRESENTS A TOPOGRAPHIC SURVEY PERFORMED IN JULY, 2022 UNDER MY
SUPERVISION, AND MEETS OR EXCEEDS INDUSTRY STANDARDS FOR TOPOGRAPHIC
SURVEYS OF ITS CLASS; PERFORMED AT THE REQUEST OF THE CITY OF
PORT TOWNSEND IN JULY, 2022.



BRIAN L. VAN ALLER 08/24/22
BRIAN L. VAN ALLER LS 35986 DATE



REVISIONS:	DATE	MARK	NOTE

TITLE: TOPOGRAPHIC MAP
9TH STREET FROM McPHERSON ST. TO
HANCOCK ST., CITY OF PORT TOWNSEND

CLIENT: CITY OF PORT TOWNSEND
250 MADISON STREET
PORT TOWNSEND, WA 98368

Van Aller Surveying

P.O. BOX 757 * CARLSBORG, WA. * 98324
PHONE: (360) 683-3438 * FAX: (360) 683-3241

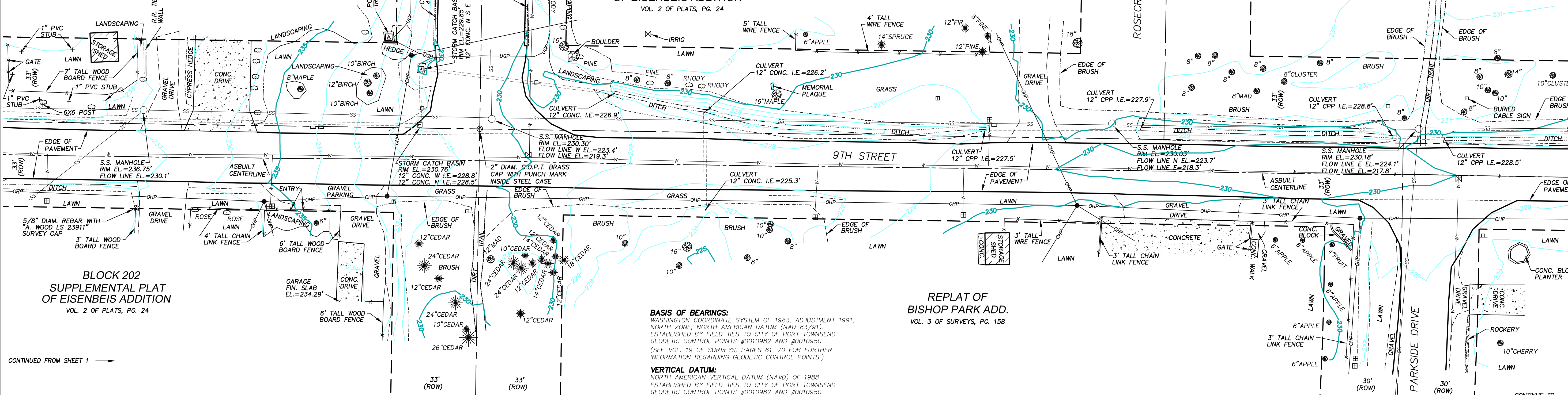
SHEET
1 OF 2
JOB NO. 01031

PROCEDURES:
THIS SURVEY IS BASED ON A GROUND SURVEY UTILIZING CONVENTIONAL TRAVERSE METHODS WITH CLOSURES THAT MEET OR EXCEED THE STANDARDS CONTAINED IN WAC 332-130-090.

EQUIPMENT:
TRIMBLE S6 3" ROBOTIC TOTAL STATION
TRIMBLE TSC2 DATA COLLECTOR

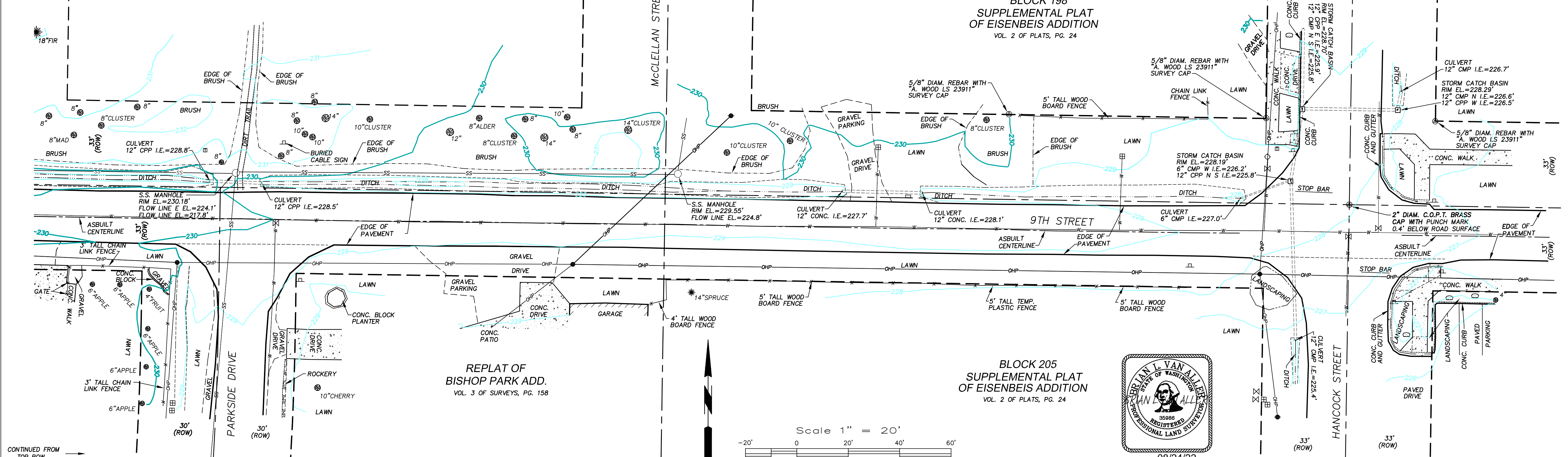
DATE OF SURVEY:
JULY, 2022
**BLOCK 201
SUPPLEMENTAL PLAT
OF EISENBEIS ADDITION**
VOL. 2 OF PLATS, PG. 24

CONTINUED FROM SHEET 1



CONTINUED FROM SHEET 1

**BLOCK 199
SUPPLEMENTAL PLAT
OF EISENBEIS ADDITION**
VOL. 2 OF PLATS, PG. 24



CONTINUED FROM TOP ROW

CONTINUED FROM TOP ROW

TOPOGRAPHIC MAP
9TH STREET FROM
McPHERSON ST. TO HANCOCK ST.
CITY OF PORT TOWNSEND
JEFFERSON COUNTY, WASHINGTON
PREPARED FOR
CITY OF PORT TOWNSEND

**BLOCK 200
SUPPLEMENTAL PLAT
OF EISENBEIS ADDITION**
VOL. 2 OF PLATS, PG. 24

**BLOCK 199
SUPPLEMENTAL PLAT
OF EISENBEIS ADDITION**
VOL. 2 OF PLATS, PG. 24

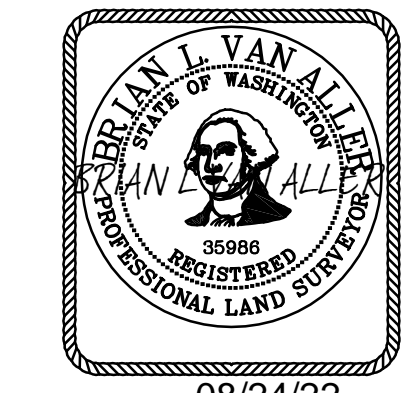
**REPLAT OF
BISHOP PARK ADD.**
VOL. 3 OF SURVEYS, PG. 158

**REPLAT OF
BISHOP PARK ADD.**
VOL. 3 OF SURVEYS, PG. 158

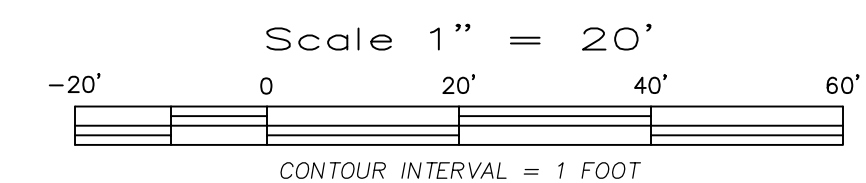
**BLOCK 205
SUPPLEMENTAL PLAT
OF EISENBEIS ADDITION**
VOL. 2 OF PLATS, PG. 24

BASIS OF BEARINGS:
WASHINGTON COORDINATE SYSTEM OF 1983, ADJUSTMENT 1991,
NORTH ZONE, NORTH AMERICAN DATUM (NAD 83/91).
ESTABLISHED BY FIELD TIES TO CITY OF PORT TOWNSEND
GEODETIC CONTROL POINTS #0010982 AND #0010950.
(SEE VOL. 19 OF SURVEYS, PAGES 61-70 FOR FURTHER
INFORMATION REGARDING GEODETIC CONTROL POINTS.)

VERTICAL DATUM:
NORTH AMERICAN VERTICAL DATUM (NAVD) OF 1988
ESTABLISHED BY FIELD TIES TO CITY OF PORT TOWNSEND
GEODETIC CONTROL POINTS #0010982 AND #0010950.



DATE: 08/24/22



REVISIONS:	DATE	MARK	NOTE

TITLE: TOPOGRAPHIC MAP
9TH STREET FROM McPHERSON ST. TO
HANCOCK ST., CITY OF PORT TOWNSEND

CLIENT: CITY OF PORT TOWNSEND
250 MADISON STREET
PORT TOWNSEND, WA 98368

Van Aler Surveying

P.O. BOX 757 * CARLSBORG, WA. * 98324
PHONE: (360) 683-3438 * FAX: (360) 683-3241

SHEET
2 OF 2

JOB NO. 01031