



# Healthier Together Center Feasibility Study

Open House 1  
April 27, 2023

opsis



# Meeting Agenda

- |           |   |        |
|-----------|---|--------|
| <b>00</b> | Welcome and Introductions   | 6:00pm |
| <b>01</b> | Presentation <ul style="list-style-type: none"><li>• Project Background</li><li>• Vision &amp; Goals</li><li>• Project Calendar</li><li>• Guiding Principles</li><li>• Service Area</li><li>• Space Program &amp; Needs</li><li>• Site Evaluation Criteria</li><li>• Potential Sites &amp; Analysis</li></ul> | 6:10pm |
| <b>02</b> | General Q&A + Next Steps  | 6:40pm |
| <b>03</b> | Community Feedback  | 7:20pm |

# Project Background

01

# Project Background

- Many efforts over the past decades to rebuild the pool/community wellness center
- Previous separate studies were completed by the City, the County, Make Waves!, the YMCA, Jefferson Healthcare, and PT School District, but never all together
- In 2021 the Pool facility failed on a few fronts and is on its last legs despite the City providing significant upgrades over the past few years to keep it open
- Common thread of previous efforts is the strong community desire for the facility
- Past attempts have shown a strong partnership is key for this initiative to move forward with all public entities engaged for the good of the whole community.
- We are all Healthier Together!

# Project Vision & Goals

02

## **Project Vision**

In collaboration with partners and the community, plan for replacing and enhancing the antiquated pool, adding health and wellness components that will meet the needs of the community.

# Goals of Study

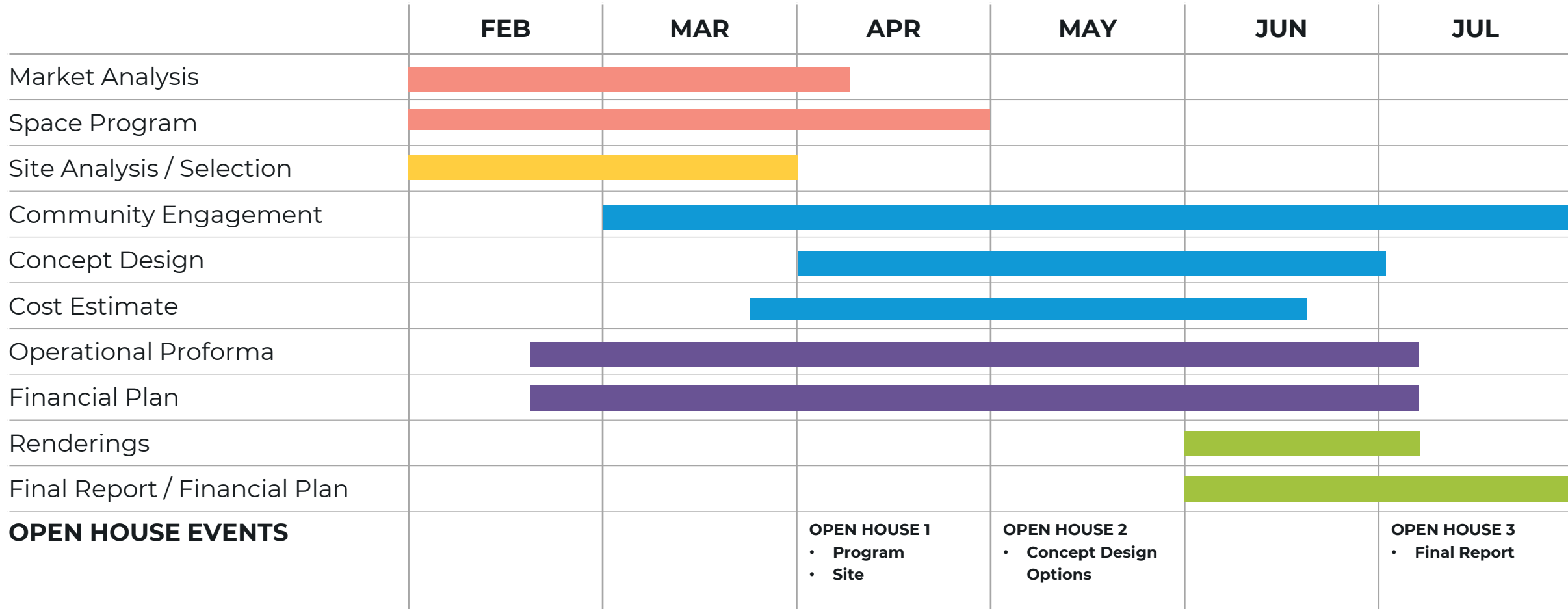
- Increase opportunities for people to live an active and healthy life.
- Plan for the future of Jefferson County
- Select a site and rebuild the pool, including health and wellness component to meet the needs of the community
- Engage Jefferson Hospital District, Jefferson County, Port of Port Townsend, Port Townsend School District, Jefferson Aquatics Coalition the YMCA, and all previous partners of this effort.
- Plan for operations and financing for this effort.

## Schedule Overview

03



# Project Calendar



**APR 27**

# Project Guiding Principles

04

# Expression of Community and Place



# Project Guiding Principles

## Project Vision

- Serves significant unmet needs for community health & wellness
- Replaces existing antiquated swimming pool
- Integrates partner & community input
- Provides welcoming safe & accessible environment for all
- Supports diversity, equity, inclusion & belonging
- Offers multipurpose spaces to maximize facility use
- Envisions legacy project for County & City
- Represents character that fits Jefferson County
- Builds on past efforts and recognizes value of previous efforts

# Project Guiding Principles

## Environmental

- Integrates sustainable & resilient design practices
- Offers Indoor-Outdoor connections & programming opportunities

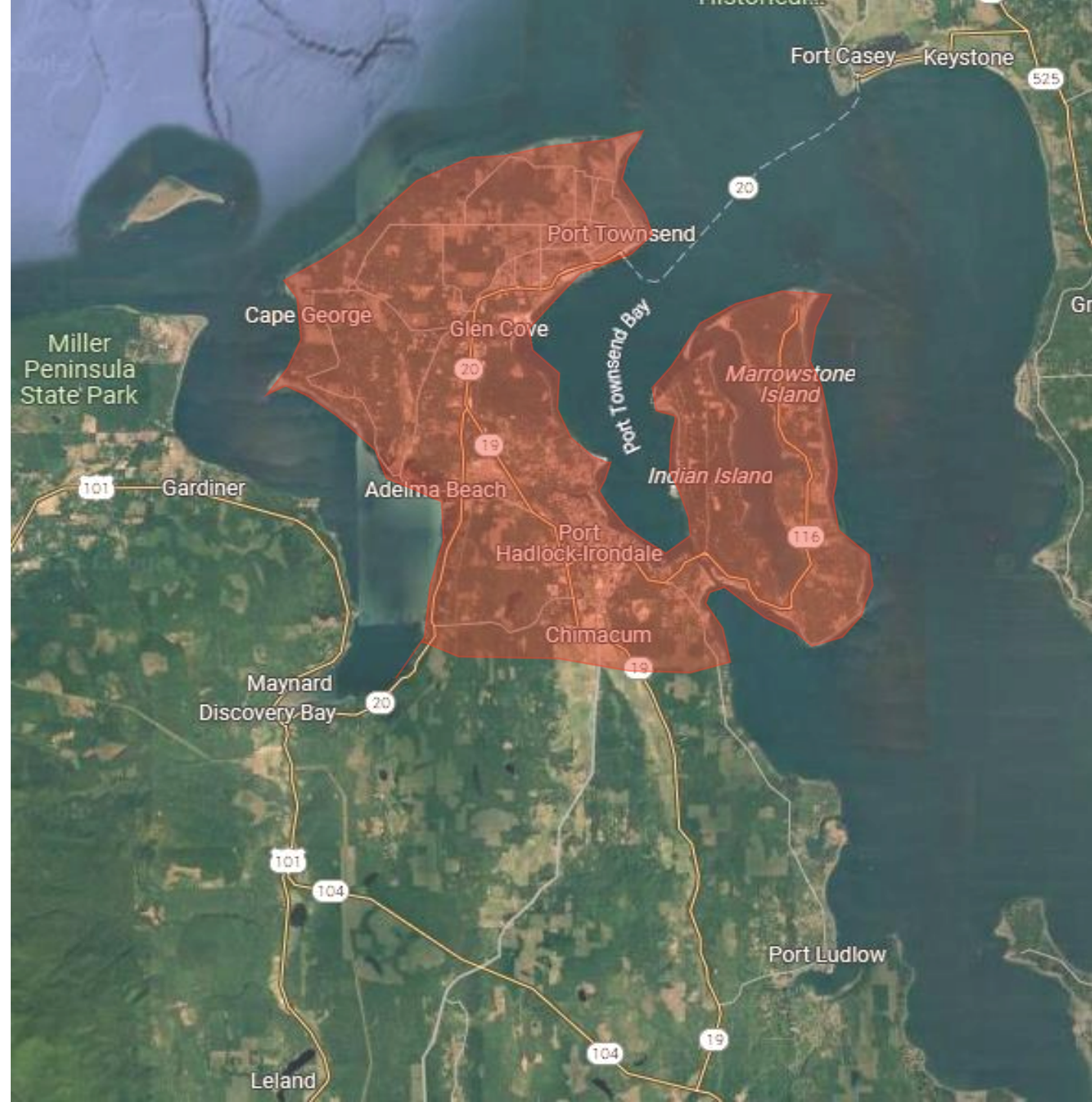
## Financial

- Establishes viable financial plan for project funding
- Optimizes value of the budget (capital & operational)
- Develops realistic budget based on today's construction cost
- Embraces full potential of partnership opportunities

**Potential Primary Service Area**

**05**

# Potential Service Area



# Space Program & Needs

06



# Program Spaces to Support Activities

## Recreation

## Community

### Aquatics

### Group Exercise

### Fitness Rm

### Classroom

### Health/Wellness



# Lap / Competition Pool – Cool Water

## Example Activities:

- Swim Lessons
- Exercise / Lap Swim
- Water Walking
- Deep Water Group Exercise
- Swim Team Practice/Competition
- Swim Clubs
- Water Polo
- Lifeguard Training
- Recreation



# Recreation Pool – Warm Water

## Example Activities:

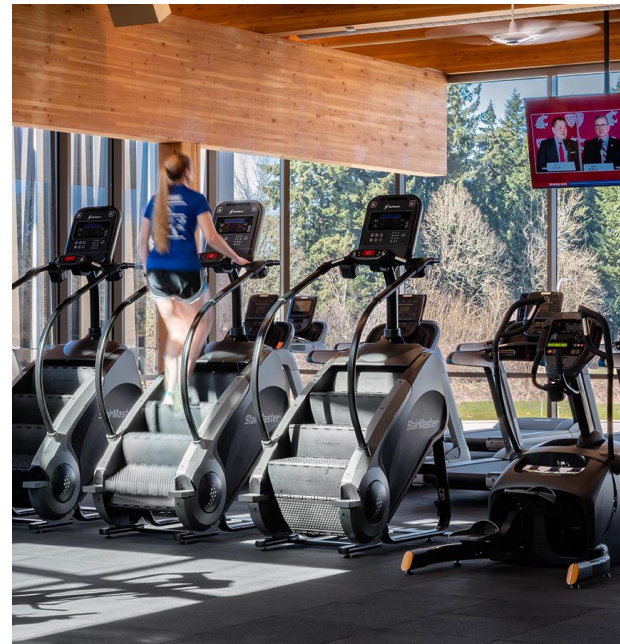
- Swim Lessons (group / private)
- Children's Waterplay
- Teen Waterplay
- Aerobic Exercise
- Therapy
- Rehab



# Cardio-Weight Fitness Room

## Example Activities:

- Health & Wellness
- Strength Training
- Cardio Workout
- Functional Training
- Personal Training
- Rehabilitation
- Physical Therapy
- Fitness Assessment
- Equipment Instruction



# Multi-Purpose Group Exercise Room

Example Activities:

- Health & Wellness
- Aerobic Exercise
- Cycling Classes
- Yoga / Pilates
- Gentle Motion Classes
- Meditation
- Dance
- Martial Arts
- Tai Chi



# Classroom | Teaching Kitchen & Birthday Parties

Example Activities:

- Health & Wellness Classes
- Seminars
- Nutrition Classes
- Cooking Classes
- Continuing Education
- After School Programs



# Physical Therapy

Example Activities:

- Therapy
- Rehabilitation
- Healthcare Access
- Exam Rooms
- Mind & Body Wellness



# Site Evaluation Criteria

07



# Site Evaluation Criteria

## Development Capacity

- Accommodates Building and Parking
- Enhances Adjacent Context
- Minimizes Impact to Existing Pool Operations

## Economic Viability

- Prominent Frontage and Visibility
- Cost Recovery Potential
- Proximity to Compatible Amenities
- Partnership Potential

## Supports Diversity, Equity & Inclusion

- Preserves & Enhances Outdoor Recreation Amenities
- Convenient Access to Bus & Bike Routes

## Regulatory Approval

- Site Selection Consistent with Current Zoning
- Avoids Potential Environmental Impact
- No Extended Approval Process

## Community Support

- Site Selection Supports Community Buy-in
- Site Selection Avoids Controversy
- Supports South County Participation
- Timing of Site Decision With This Study

# Potential Sites & Analysis

08

# Site Options



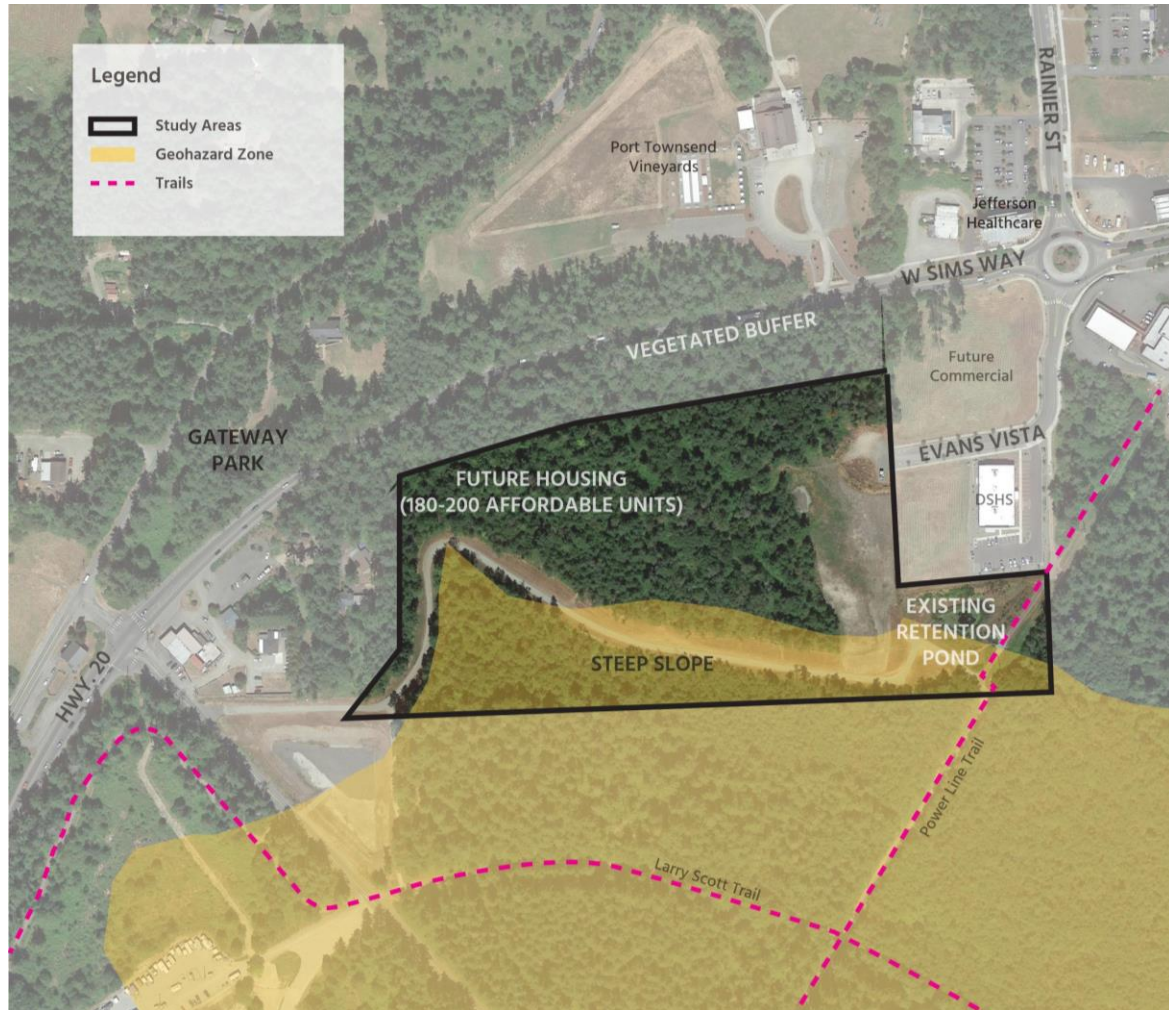
# Evan's Vista Context

Area: 14 acres



# Evan's Vista Site

Area: 14 acres



Site Analysis



Test Fit Diagram

# Evan's Vista Context

Area: 14 acres

## PROS

Location Supports South County Participation

Accommodates Building and Parking

Convenient Access to Bus & Bike Routes

Proximity to Compatible Amenities

Partnership Potential

Timing of Site Decision with this Study

Enhances Adjacent Context

Site Avoids Controversy

Minimizes Impact to Pool Operations

## CONS

Prominent Frontage and Visibility

Cost Recovery Potential



# Jeff. Healthcare Context

Area: 0.74 acres



# Jeff. Healthcare Site

Area: 0.74 acres



Site Analysis



Test Fit Diagram



# Jeff. Healthcare Context

Area: 0.74 acres

## PROS

Prominent Frontage and Visibility

Partnership Potential

Proximity to Compatible Amenities

Timing of Site Decision with this Study

Enhances Adjacent Context

Cost Recovery Potential

Site Avoids Controversy

Minimizes Impact to Pool Operations

## CONS

Accommodates Building and Parking

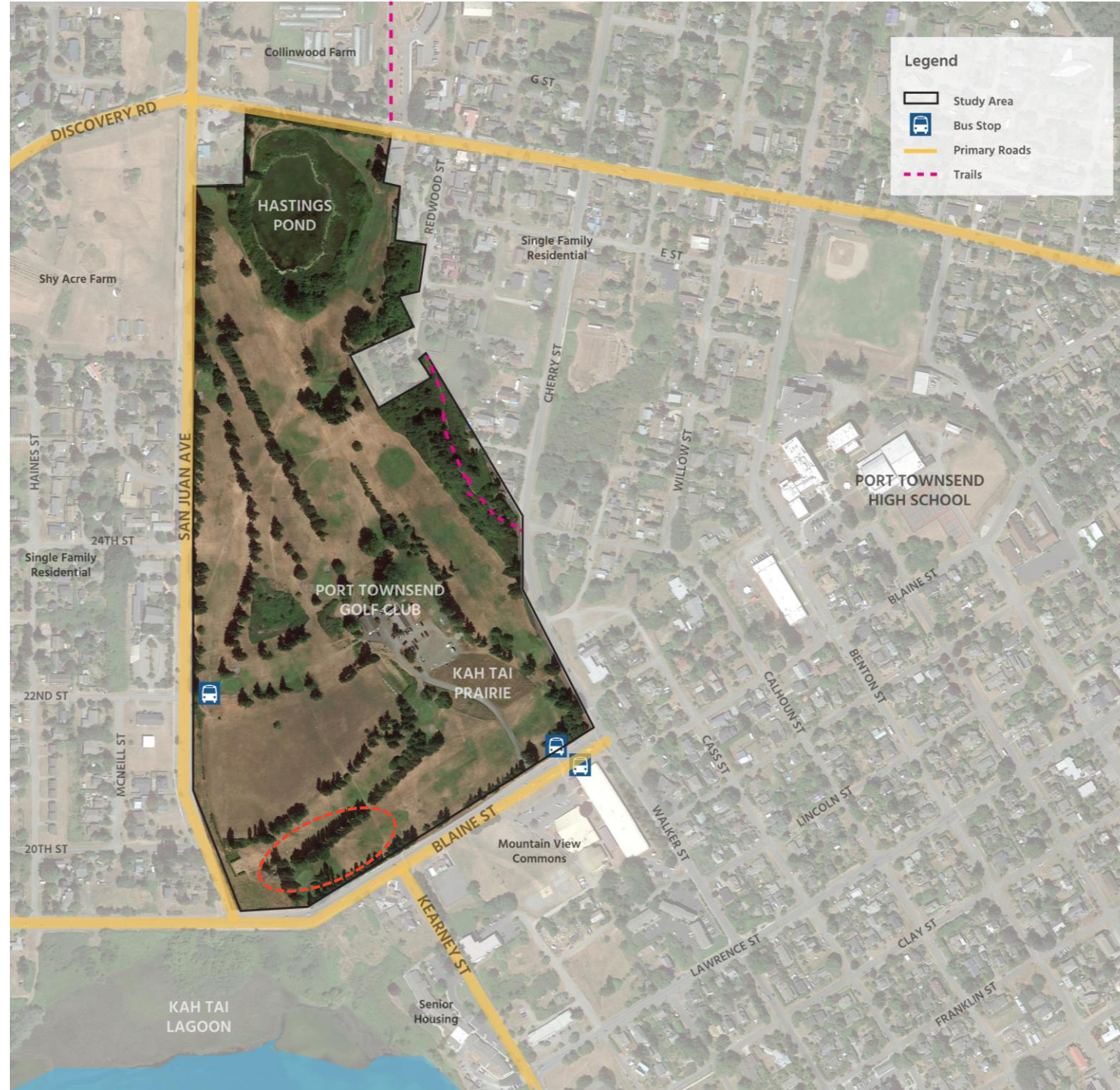
Location Supports South County Participation

Convenient Access to Bus & Bike Routes



# Golf Course Context

Area: 58 acres



# Golf Course Site

Area: 58 acres



Site Analysis



Test Fit Diagram

# Golf Course Context

Area: 58 acres

## PROS

Accommodates Building and Parking

Prominent Frontage and Visibility

Cost Recovery Potential

Proximity to Compatible Amenities

Convenient Access to Bus & Bike Routes

Partnership Potential

Minimizes Impact to Pool Operations

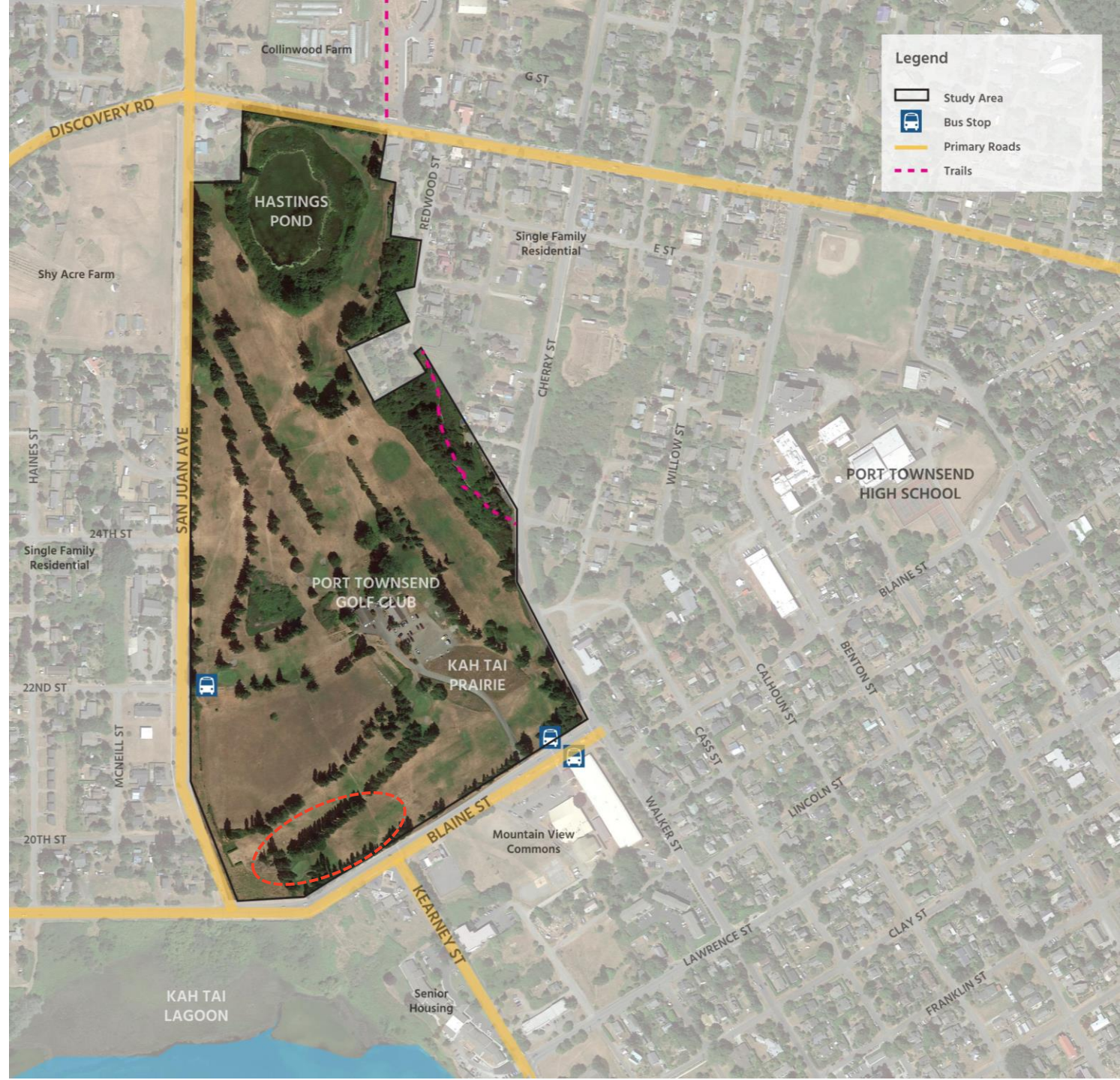
## CONS

Timing of Site Decision with this Study

Impacts Existing Golf Course Layout

Site Avoids Controversy

Location Supports South County Participation



# Mtn View Context

Area: 3.9 acres



# Mtn View Commons Site

Area: 3.9 acres



Site Analysis



Test Fit Diagram

# Mtn View Context

Area: 3.9 acres

## PROS

Accommodates Building and Parking

Prominent Frontage and Visibility

Proximity to Compatible Amenities

Convenient Access to Bus & Bike Routes

Partnership Potential

Timing of Site Decision with this Study

Enhances Adjacent Context

Cost Recovery Potential

Site Avoids Controversy

Minimizes Impact to Pool Operations

## CONS

Impacts Dog Park

Limited Construction Staging

Location Supports South County Participation



## Q&A and Next Steps

09



## **Next Steps**

- Community Survey through May 11th
- Determine Preferred Program
- Determine Preferred Site
- Develop Initial Concept Design Studies
- Public Open House 2 in late May/early June

# Community Feedback

10

# We want to hear from you:

Online Survey:



Turn on camera app



Frame the QR



Click the pop-up

Healthier Together Aquatics Center  
Feasibility Study

