



# CITY OF PORT TOWNSEND

## GOLF COURSE + MT. VIEW COMMONS

### CONCEPT PLANNING

Stakeholder Meeting #12 - July 31, 2023



# AGENDA

**3:30-3:35 WELCOME**

**3:35-4:00 CITY COUNCIL FEEDBACK ON PUBLIC INPUT**

**4:00-4:55 PLANNING EXERCISE**

**4:55-5:00 NEXT STEPS**

# COUNCIL FEEDBACK ON PUBLIC INPUT

## **MAYOR**

- Most good for the most people
- Hybrid does not work for the community
- Concerned about Central Park Plan
- Cannot keep up our existing park land
- Great idea-central park with a nod to golf.
- Keep driving range and putting green
- Keeps a nod to the history
- Repurpose the rest of the golf course to the idea of deed restrictions.
- Keep central part untouched. Leave for recreation or open space.
- South side along Blaine street. Easily walkable 10-12 acre swatch with no deed restrictions. On bus lines. Existing infrastructure
- Kah Tai Prairie massively expand. We don't have the money for a central park option.
- Doing the dog park on the corner on San Juan.

# COUNCIL FEEDBACK ON PUBLIC INPUT

## **MONICA**

- Housing – Space for Future Housing
- Space for Children/Families
- Restaurant

## **BEN**

- Golf
- Housing
- Space for Children/Families
- Legacy
- Non-profit

## **AMY**

- Third Space | Community Space

## **LIBBY**

- Housing

# COUNCIL FEEDBACK ON PUBLIC INPUT

- Connectivity | Access
- Community Center
- Dog Park
- Place for Children | Families
- Some Golf

## **OWEN**

- Connectivity | Access
- Equity
- Financial Sustainability
- Housing
- Legacy of Golf Course
- Legacy of Prairie

## **AISLINN**

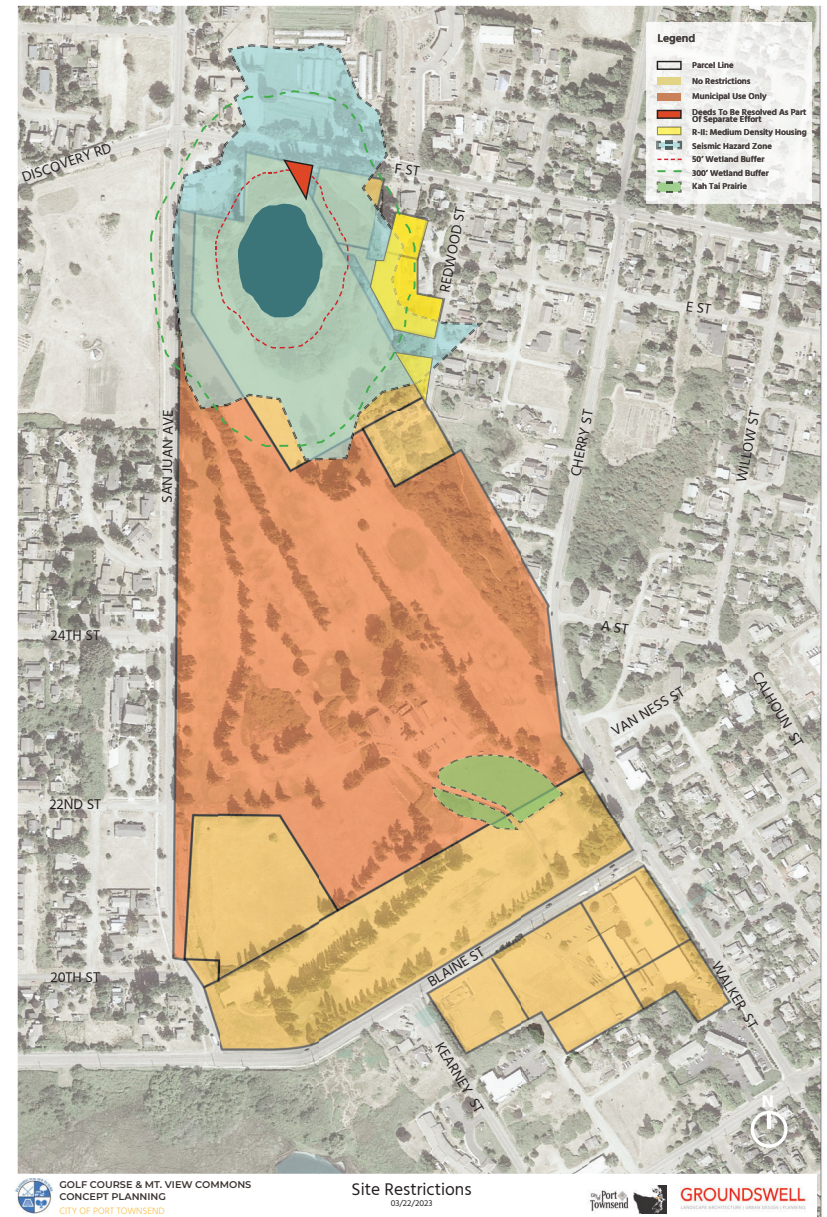
- Public property should be used more

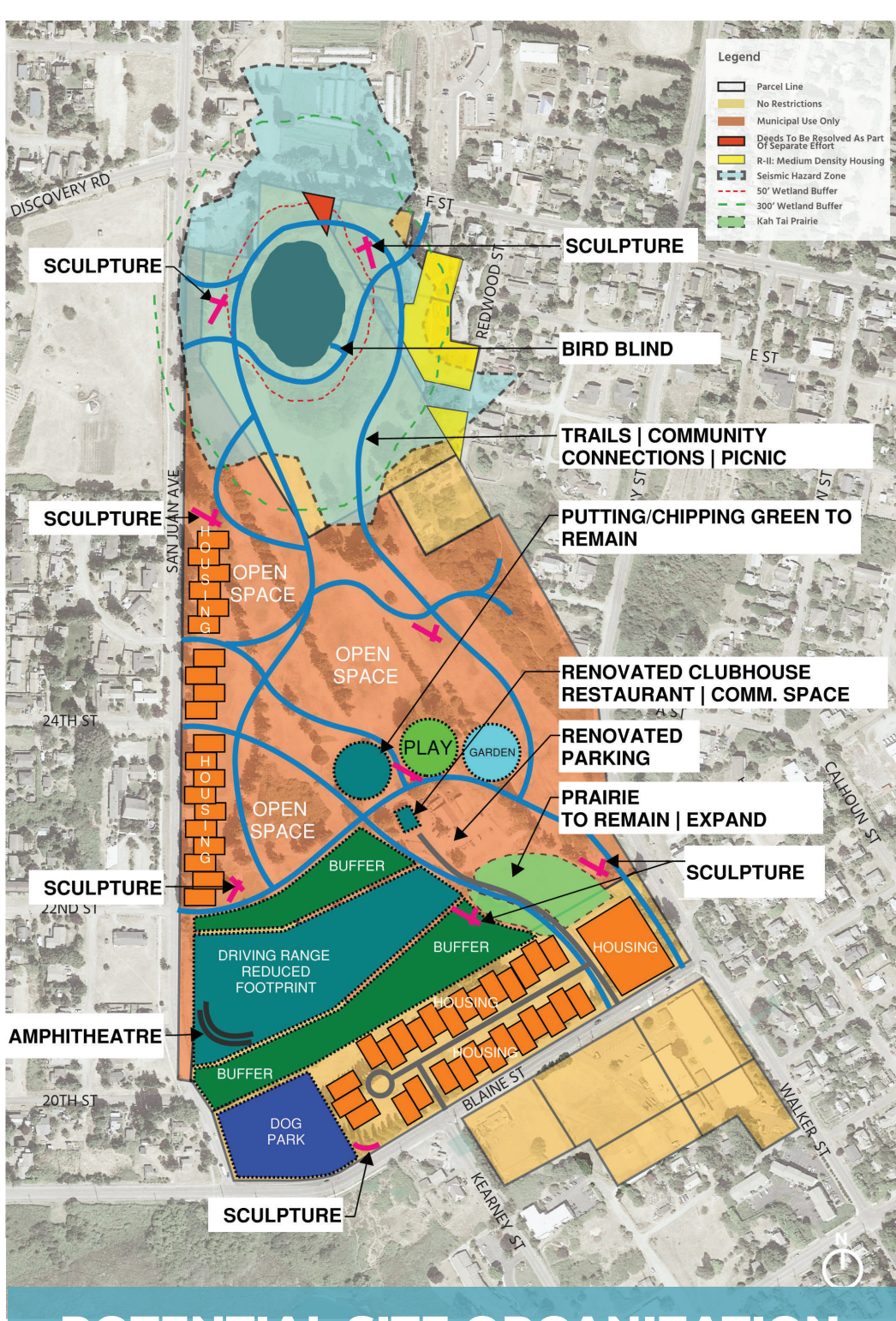
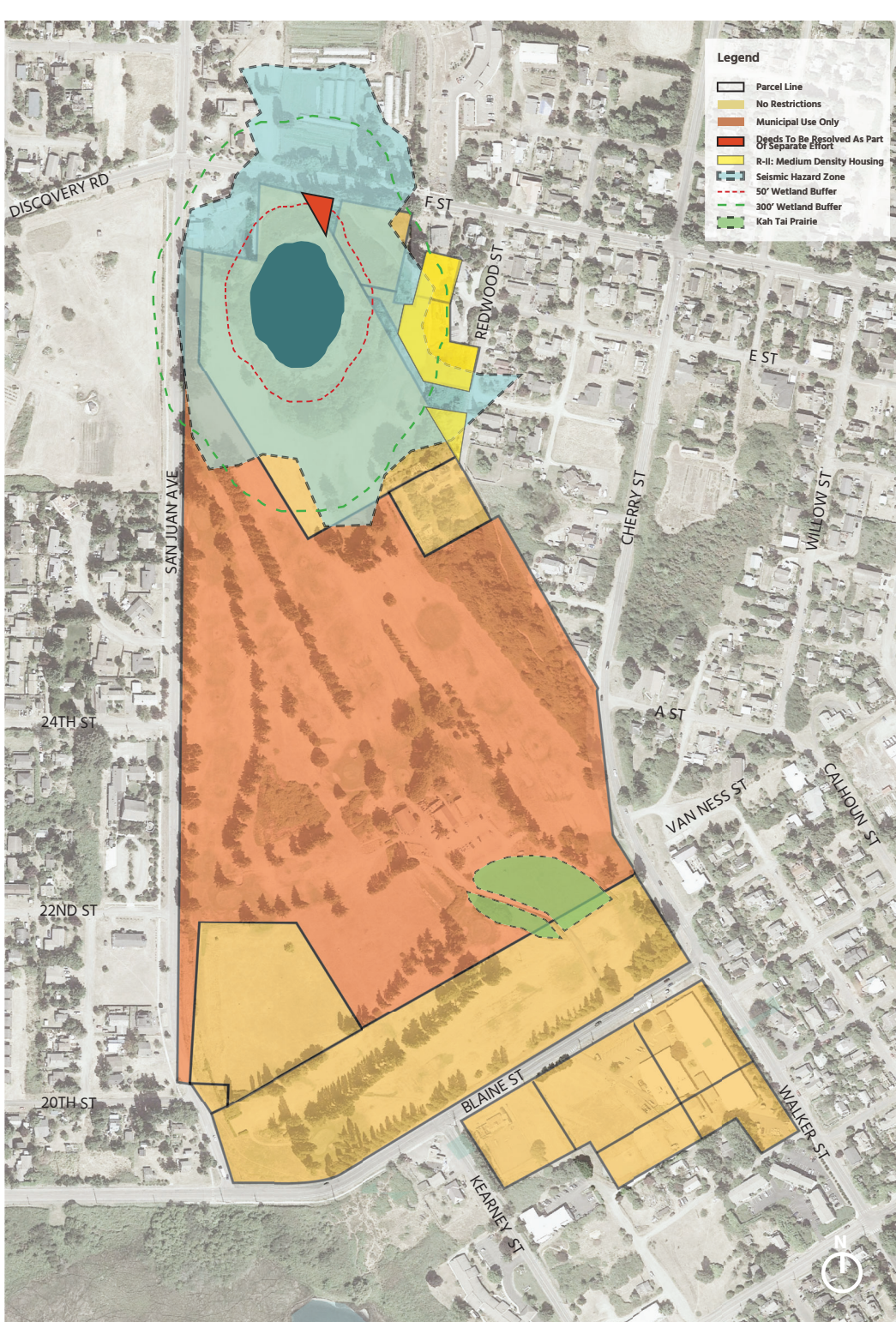
A photograph of a golf course path. The path is a dirt and grass trail that curves through a lush green landscape. In the background, there are several large, mature trees with dense foliage. The sky is overcast with soft, grey clouds. The overall scene is peaceful and scenic.

# PLANNING EXERCISE

# HOUSING

- **SIGNIFICANT COMMUNITY NEED FOR LOW INCOME + AFFORDABLE HOUSING**
- **R-II: MEDIUM DENSITY HOUSING ZONE (EIGHT UNITS PER 40,000 S.F.)**
- **SOME WANT HOUSING. SOME DO NOT.**
- **SCOPE DID NOT INCLUDE:**
  - **HOUSING ANALYSIS**
  - **HOUSING DIRECTIVE**







# NEXT STEPS

**SEPTEMBER 18th - CITY COUNCIL MEETING / WORK SESSION**

**SEPTEMBER 25th - CITY COUNCIL MEETING (DECISION)**

# THANK YOU!



City of Port  
Townsend



## GROUNDSWELL

LANDSCAPE ARCHITECTURE | URBAN DESIGN | PLANNING