



Healthier Together Center Feasibility Study

Open House 1
March 14, 2023

opsis



Meeting Agenda

- | | | |
|-----------|---|--------|
| 00 | Welcome and Introductions | 6:00pm |
| 01 | Presentation <ul style="list-style-type: none">• Project Background• Vision & Goals• Project Calendar• Guiding Principles• Service Area• Space Program & Needs• Site Evaluation Criteria• Potential Sites & Analysis | 6:10pm |
| 02 | Community Feedback | 6:40pm |
| 03 | General Q&A | 7:20pm |
| 04 | Next Steps | 7:50pm |

Project Background

01

Project Background

- Many efforts over the past decades to rebuild the pool/community wellness center
- Previous separate studies were completed by the City, the County, Make Waves!, the YMCA, Jefferson Healthcare, and PT School District, but never all together
- In 2021 the Pool facility failed on a few fronts and is on its last legs despite the City providing significant upgrades over the past few years to keep it open
- Common thread of previous efforts is the strong community desire for the facility
- Past attempts have shown a strong partnership is key for this initiative to move forward with all public entities engaged for the good of the whole community.
- We are all Healthier Together!

Project Vision & Goals

02

Project Vision

In collaboration with partners and the community, plan for replacing and enhancing the antiquated pool, adding health and wellness components that will meet the needs of the community.

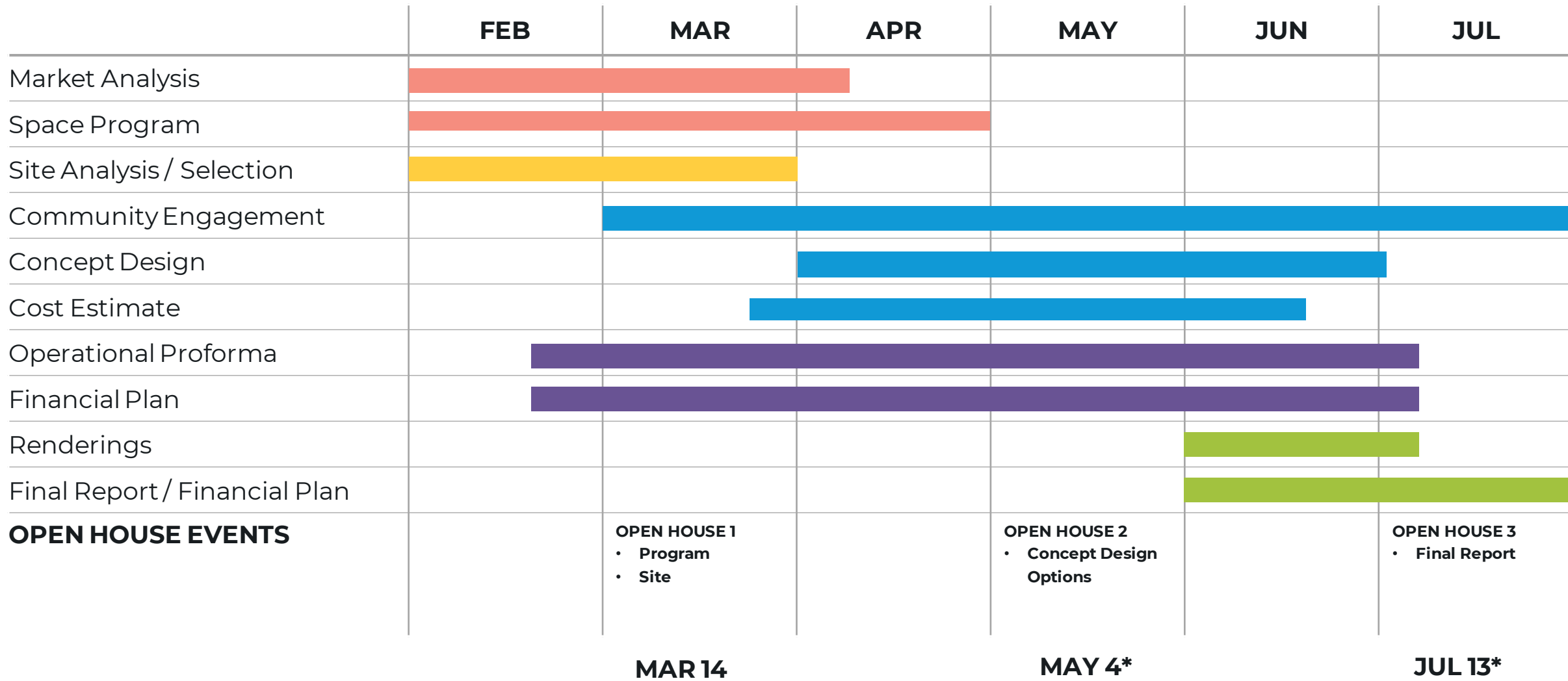
Goals of Study

- Increase opportunities for people to live an active and healthy life.
- Plan for the future of Jefferson County
- Select a site and rebuild the pool, including health and wellness component to meet the needs of the community
- Engage Jefferson Hospital District, Jefferson County, Port of Port Townsend, Port Townsend School District, Jefferson Aquatics Coalition the YMCA, and all previous partners of this effort.
- Plan for operations and financing for this effort.

Schedule Overview

03

Project Calendar



* Dates subject to change

Project Guiding Principles

04

Expression of Community and Place



Project Guiding Principles

Project Vision

- Serves significant unmet needs for community health & wellness
- Replaces existing antiquated swimming pool
- Integrates partner & community input
- Provides welcoming safe & accessible environment for all
- Supports diversity, equity, inclusion & belonging
- Offers multipurpose spaces to maximize facility use
- Envisions legacy project for County & City
- Represents character that fits Jefferson County
- Builds on past efforts and recognizes value of previous efforts

Project Guiding Principles

Environmental

- Integrates sustainable & resilient design practices
- Offers Indoor-Outdoor connections & programming opportunities

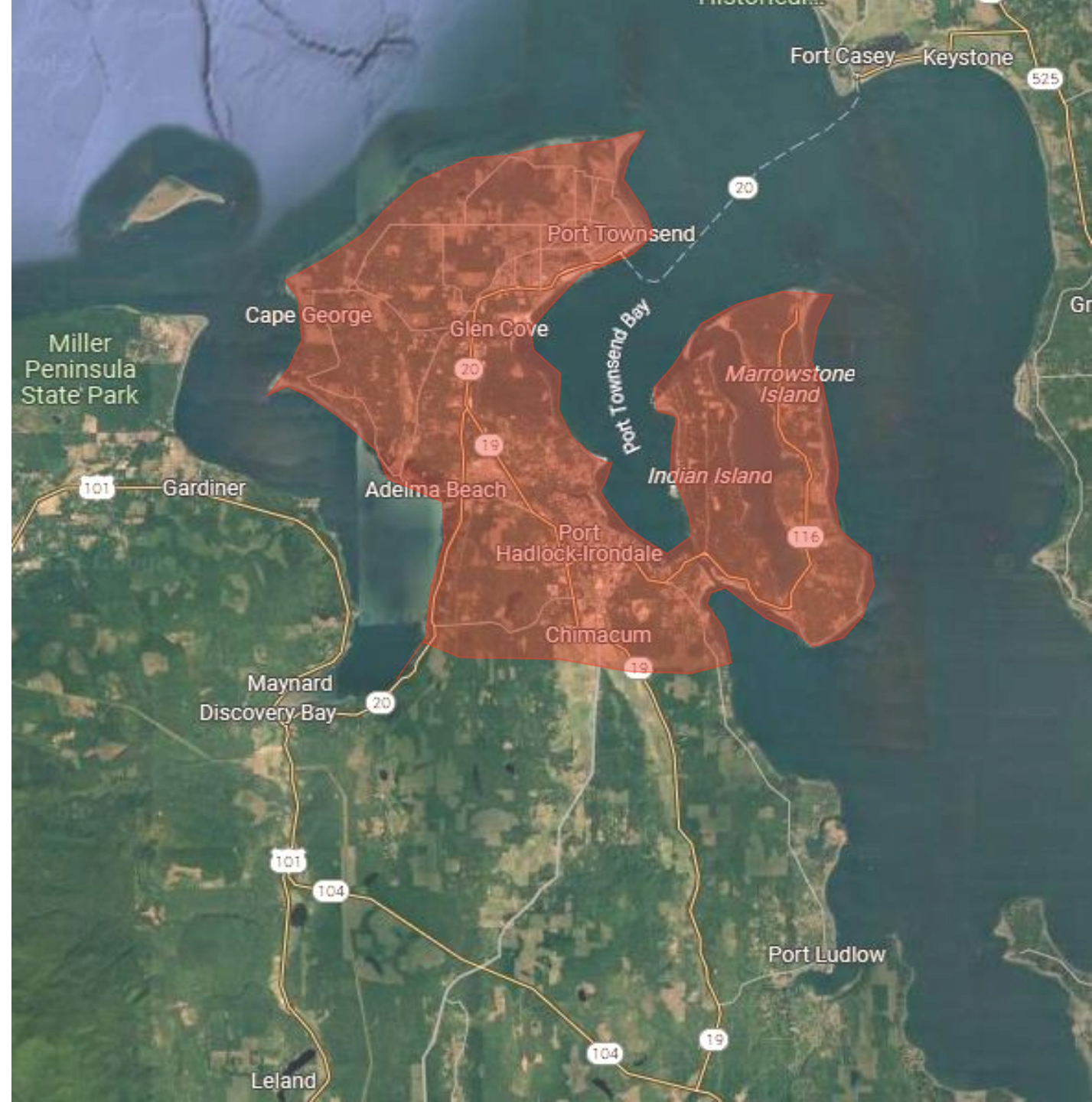
Financial

- Establishes viable financial plan for project funding
- Optimizes value of the budget (capital & operational)
- Develops realistic budget based on today's construction cost
- Embraces full potential of partnership opportunities

Potential Primary Service Area

05

Potential Service Area



Space Program & Needs

06

Program Spaces to Support Activities

Recreation

Community

Aquatics

Group Exercise

Fitness Rm

Classroom

Health/Wellness



Lap / Competition Pool – Cool Water

Example Activities:

- Swim Lessons
- Exercise / Lap Swim
- Water Walking
- Deep Water Group Exercise
- Swim Team Practice/Competition
- Swim Clubs
- Water Polo
- Lifeguard Training
- Recreation



Recreation Pool – Warm Water

Example Activities:

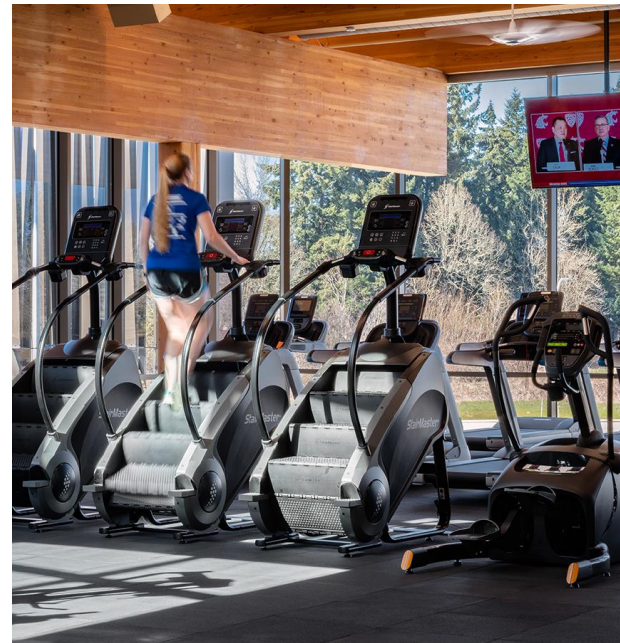
- Swim Lessons (group / private)
- Children's Waterplay
- Teen Waterplay
- Aerobic Exercise
- Therapy
- Rehab



Cardio-Weight Fitness Room

Example Activities:

- Health & Wellness
- Strength Training
- Cardio Workout
- Functional Training
- Personal Training
- Rehabilitation
- Physical Therapy
- Fitness Assessment
- Equipment Instruction



Multi-Purpose Group Exercise Room

Example Activities:

- Health & Wellness
- Aerobic Exercise
- Cycling Classes
- Yoga / Pilates
- Gentle Motion Classes
- Meditation
- Dance
- Martial Arts
- Tai Chi



Classroom | Teaching Kitchen & Birthday Parties

Example Activities:

- Health & Wellness Classes
- Seminars
- Nutrition Classes
- Cooking Classes
- Continuing Education
- After School Programs



	Original rate	Updated rate
Food	1.4%	2.4%
Health	1.2%	1.1%
Energy	2.3%	2.0%
Travel	8.8%	7.4%

Physical Therapy

Example Activities:

- Therapy
- Rehabilitation
- Healthcare Access
- Exam Rooms
- Mind & Body Wellness



Site Evaluation Criteria

07

Site Evaluation Criteria

Development Capacity

- Accommodates Building and Parking
- Enhances Adjacent Context
- Minimizes Impact to Existing Pool Operations

Economic Viability

- Prominent Frontage and Visibility
- Cost Recovery Potential
- Proximity to Compatible Amenities
- Partnership Potential

Supports Diversity, Equity & Inclusion

- Preserves & Enhances Outdoor Recreation Amenities
- Convenient Access to Bus & Bike Routes

Regulatory Approval

- Site Selection Consistent with Current Zoning
- Avoids Potential Environmental Impact
- No Extended Approval Process

Community Support

- Site Selection Supports Community Buy-in
- Site Selection Avoids Controversy
- Supports South County Participation
- Timing of Site Decision With This Study

Potential Sites & Analysis

08

Site Options



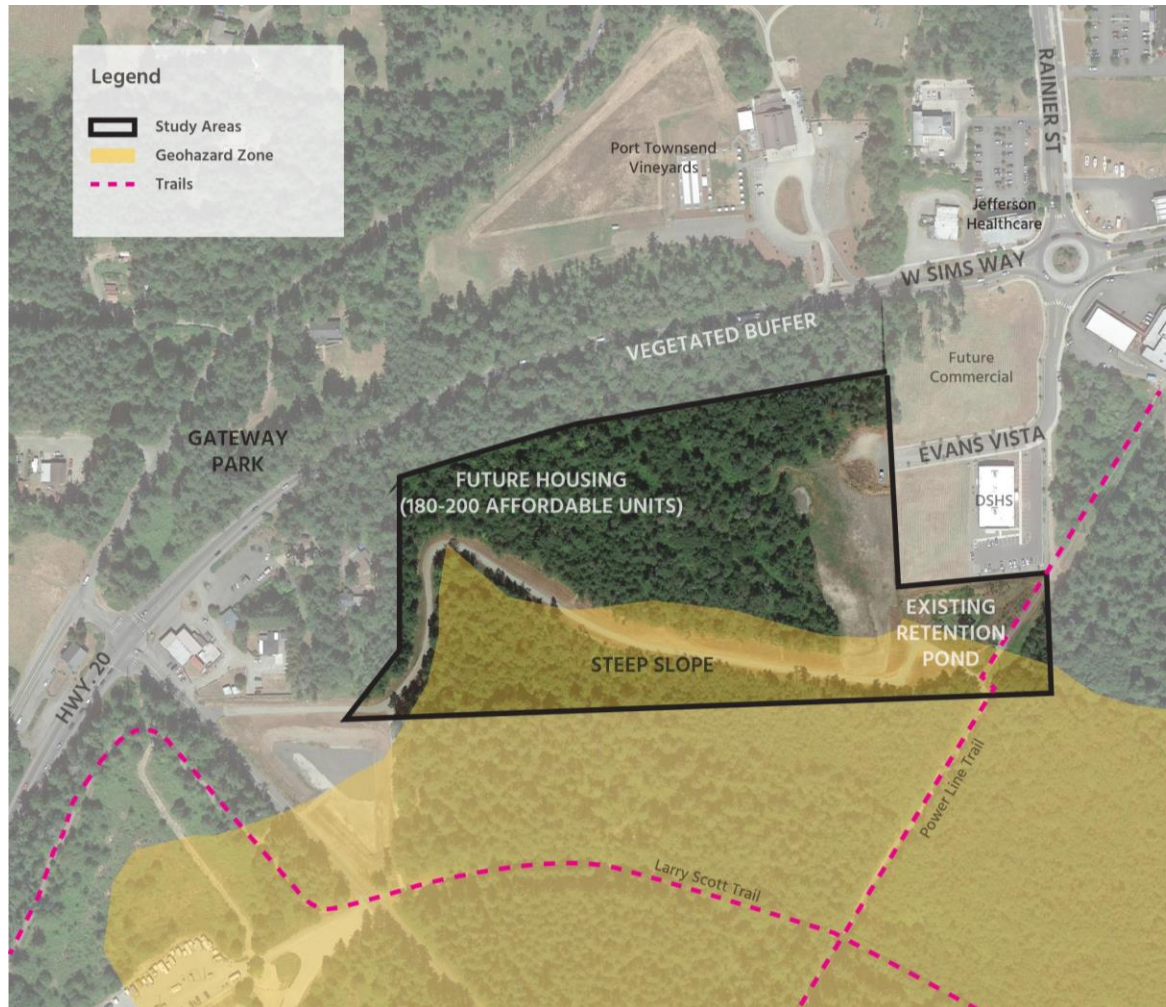
Evan's Vista Context

Area: 14 acres



Evan's Vista Site

Area: 14 acres



Site Analysis



Test Fit Diagram

Evan's Vista Context

Area: 14 acres

PROS

Location Supports South County Participation

Accommodates Building and Parking

Proximity to Compatible Amenities

Partnership Potential

Timing of Site Decision with this Study

Enhances Adjacent Context

Site Avoids Controversy

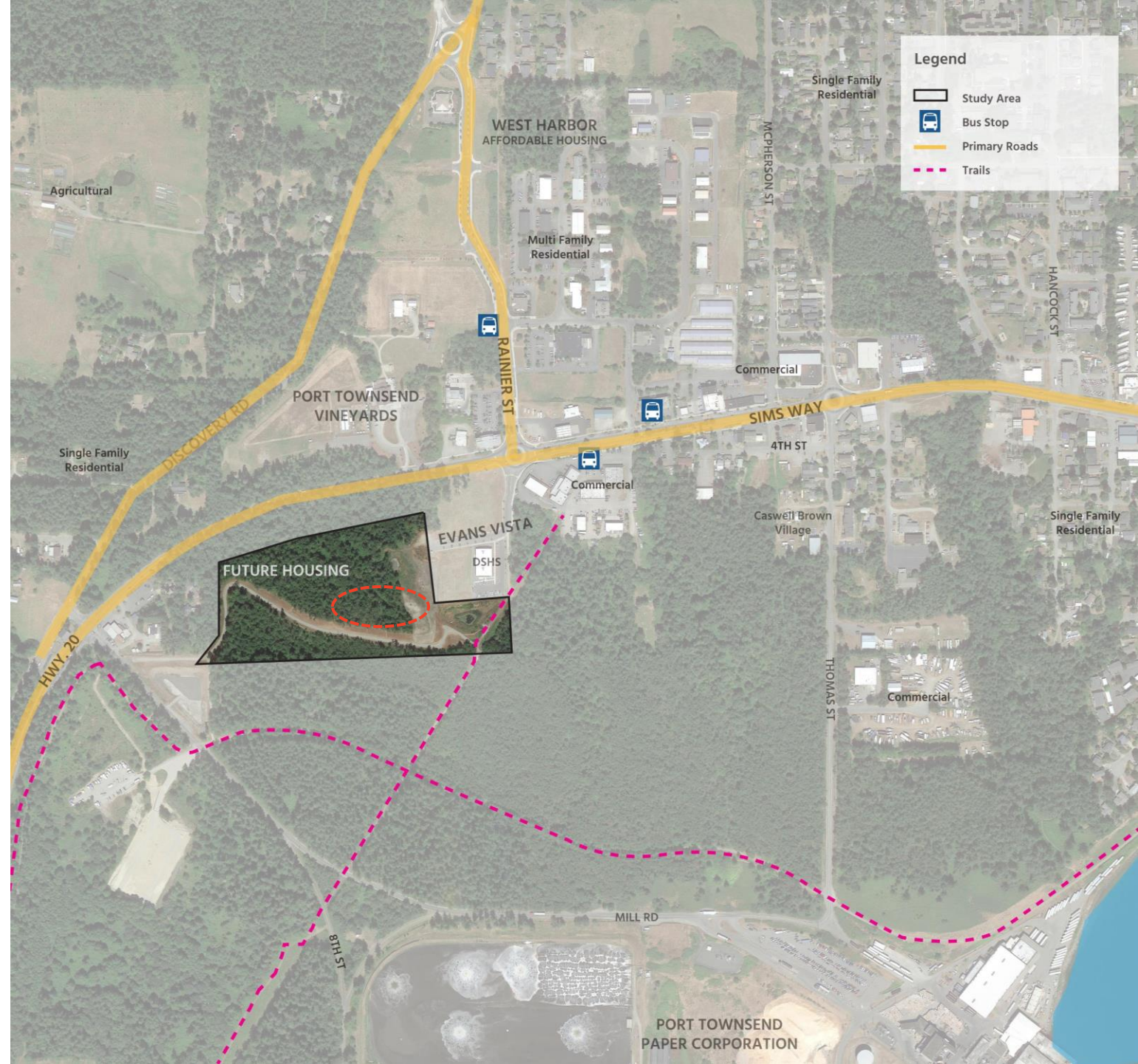
Minimizes Impact to Pool Operations

CONS

Prominent Frontage and Visibility

Cost Recovery Potential

Convenient Access to Bus & Bike Routes



Jeff. Healthcare Context

Area: 0.74 acres



Jeff. Healthcare Site

Area: 0.74 acres



Site Analysis



Test Fit Diagram

Jeff. Healthcare Context

Area: 0.74 acres

PROS

Prominent Frontage and Visibility

Partnership Potential

Proximity to Compatible Amenities

Timing of Site Decision with this Study

Enhances Adjacent Context

Cost Recovery Potential

Site Avoids Controversy

Minimizes Impact to Pool Operations

CONS

Accommodates Building and Parking

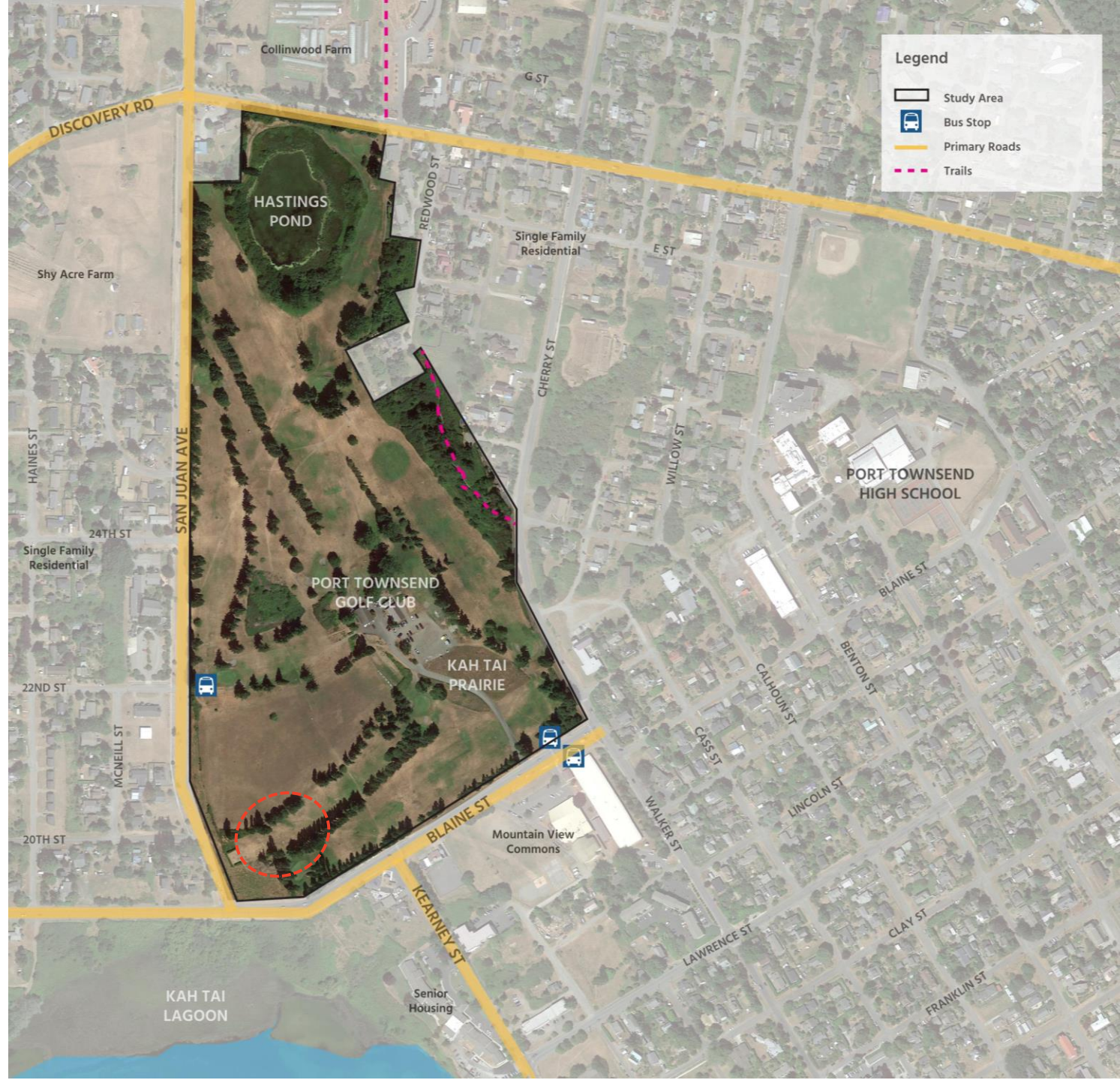
Location Supports South County Participation

Convenient Access to Bus & Bike Routes



Golf Course Context

Area: 58 acres



Golf Course Site

Area: 58 acres



Site Analysis



Test Fit Diagram

Golf Course Context

Area: 58 acres

PROS

Accommodates Building and Parking

Prominent Frontage and Visibility

Cost Recovery Potential

Proximity to Compatible Amenities

Convenient Access to Bus & Bike Routes

Partnership Potential

Minimizes Impact to Pool Operations

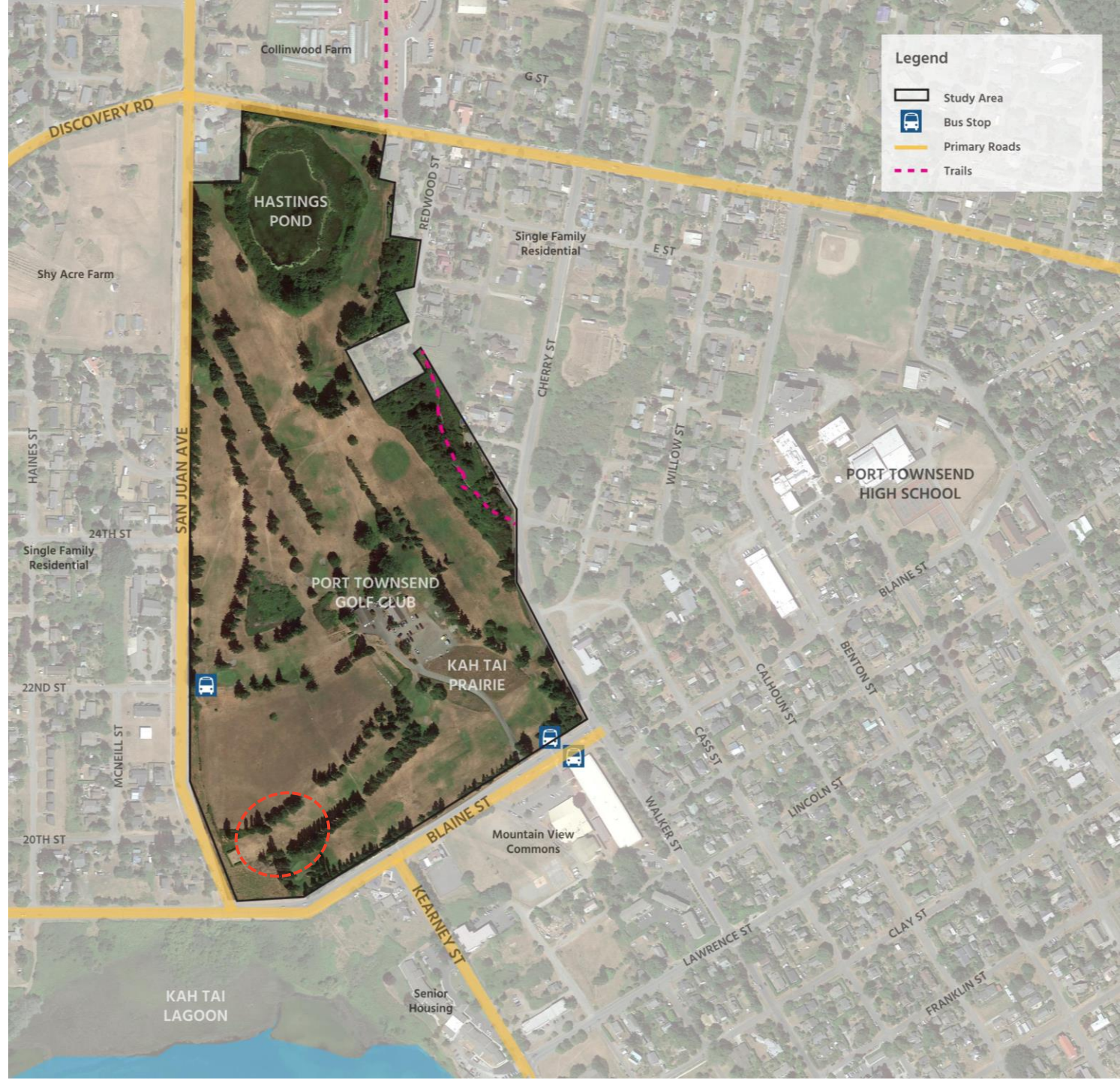
CONS

Timing of Site Decision with this Study

Impacts Existing Golf Course Layout

Site Avoids Controversy

Location Supports South County Participation



Mtn View Context

Area: 3.9 acres



Mtn View Commons Site

Area: 3.9 acres



Site Analysis



Test Fit Diagram

Mtn View Context

Area: 3.9 acres

PROS

Accommodates Building and Parking

Prominent Frontage and Visibility

Proximity to Compatible Amenities

Convenient Access to Bus & Bike Routes

Partnership Potential

Timing of Site Decision with this Study

Enhances Adjacent Context

Cost Recovery Potential

Site Avoids Controversy

Minimizes Impact to Pool Operations

CONS

Impacts Dog Park

Location Supports South County Participation

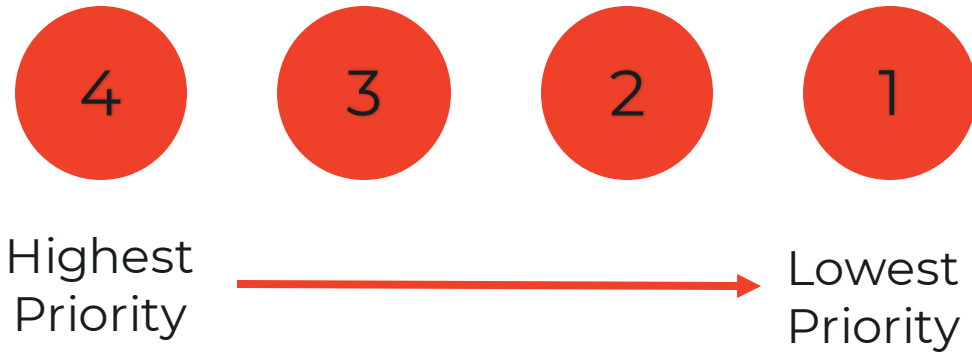


Community Feedback

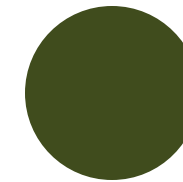
09

We want to hear from you:

1. Please vote for your top 4 amenities by priority.



2. Please vote for your preferred site with one dot



3. There is a blank write-in board for other amenities – use post-it

We want to hear from you:

Online Survey:



Turn on camera app



Frame the QR



Click the pop-up

Healthier Together Aquatics Center
Feasibility Study



Wrap-Up & Next Steps

10

Next Steps

- Community Survey through March 31st
- Determine Preferred Program
- Determine Preferred Site
- Develop Initial Concept Design Studies
- Public Open House 2 in May